

± 5,857 SF OFFICE OR RETAIL SPACE FOR LEASE
WITH GREAT PARKING



3626 W JEFFERSON BLVD
LOS ANGELES, CA 90016



A DIVISION OF



LEE &
ASSOCIATES



PREMISES

Total: ± 5,857 SF
Mezz: ± 646 SF
Main floor: ± 5,211 SF

RENT

Contact Broker

OCCUPANCY

Immediate

FEATURES

- Bow-Truss Building
- Unique Corner Lot
- High Ceilings
- Glass Roll Up Door
- Outdoor Patio
- Warm Shell Complete
- Flexible Layout
- Power: 800A, 120/208V, 3PH, 4W

PARKING

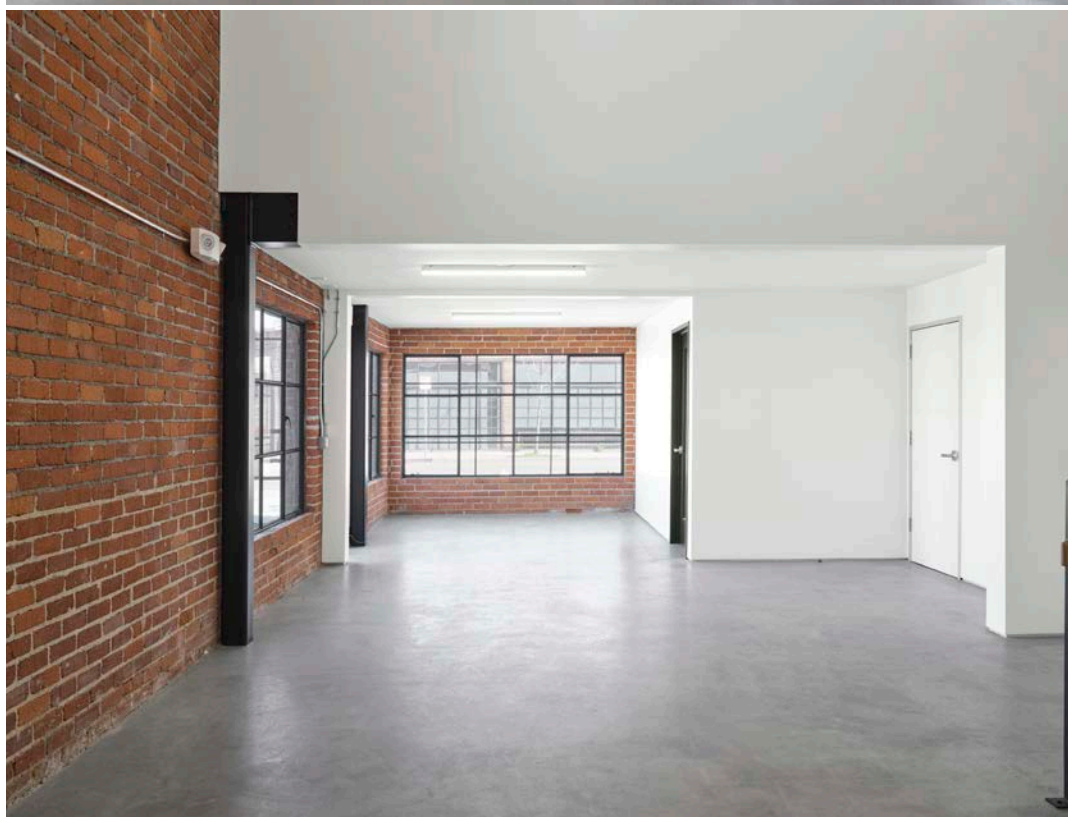
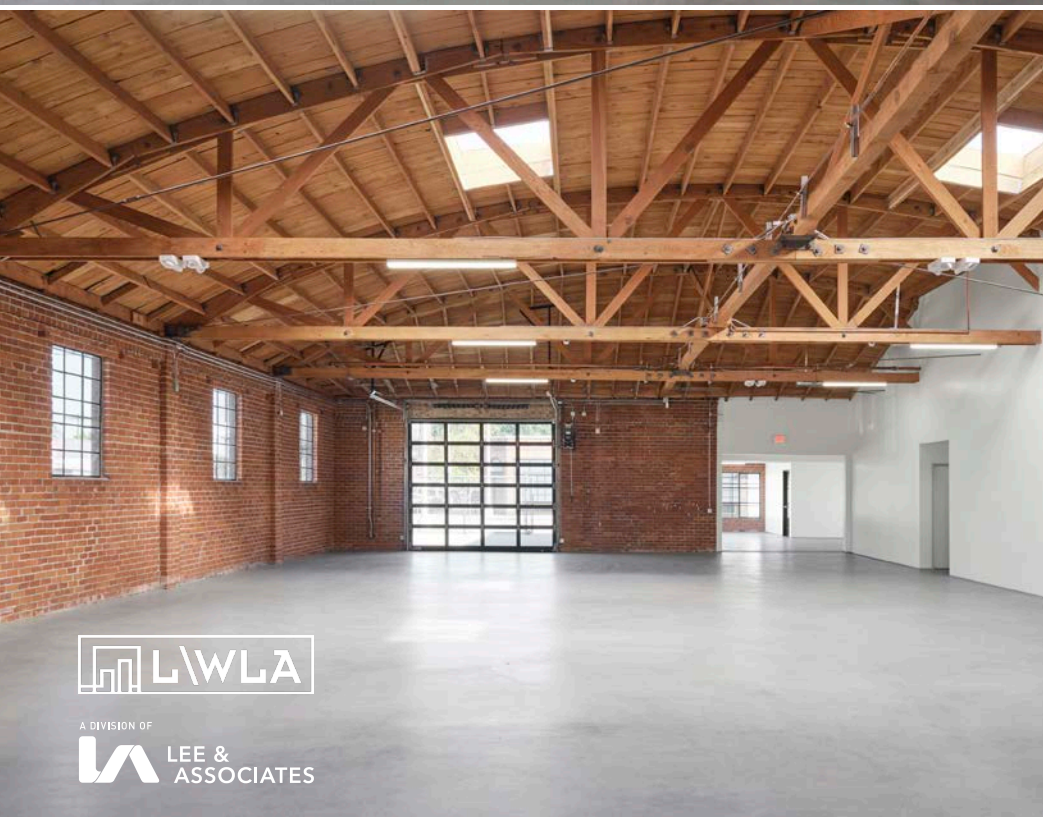
Great Parking, Contact Broker

CONTACTS

Vaun Lennon
310.899.2713
vlennon@leewestla.com
AGT DRE 01993617

Robert Clifford
310.899.2725
rclifford@leewestla.com
AGT DRE 00999184

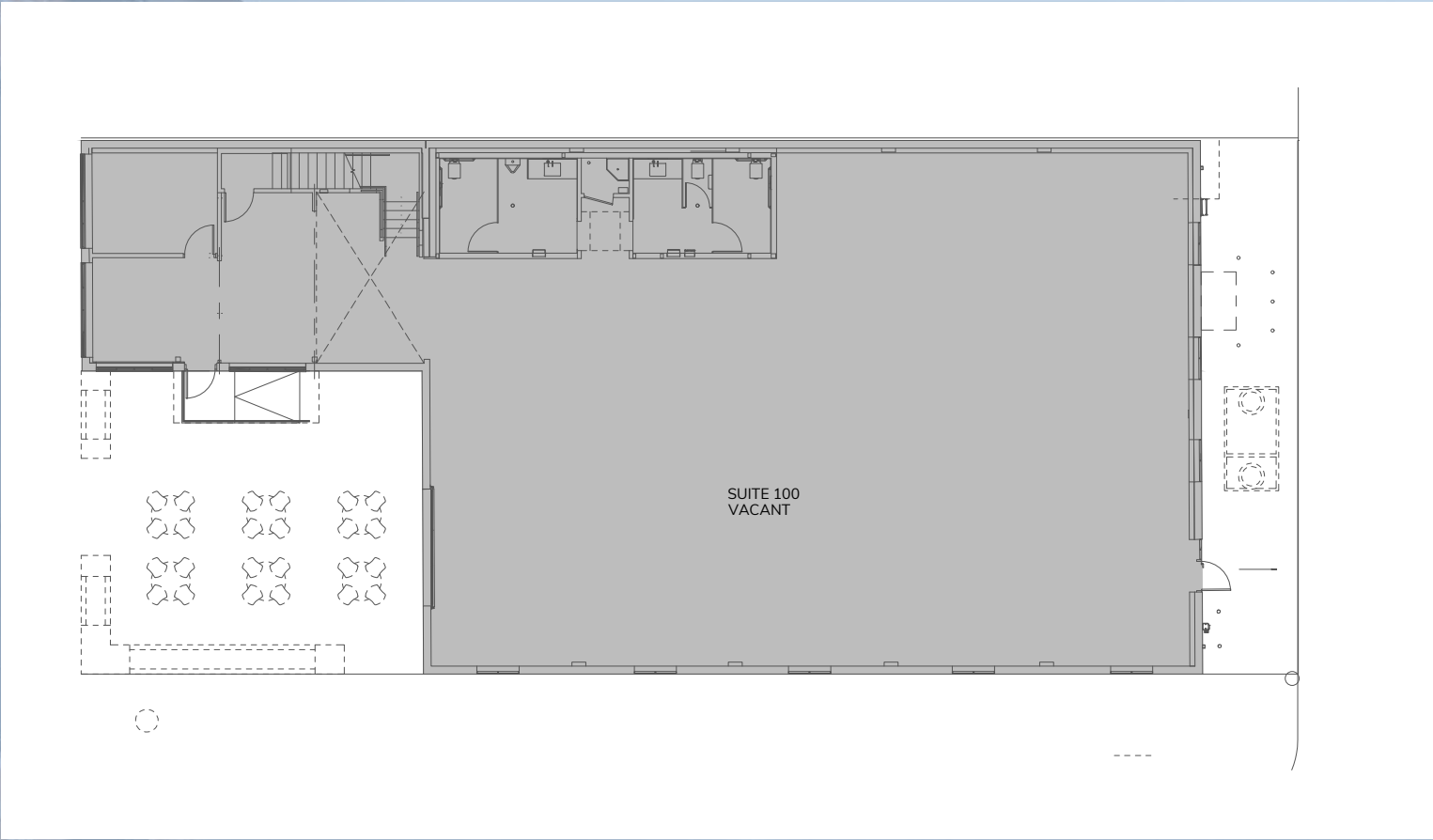
INTERIOR PHOTOS



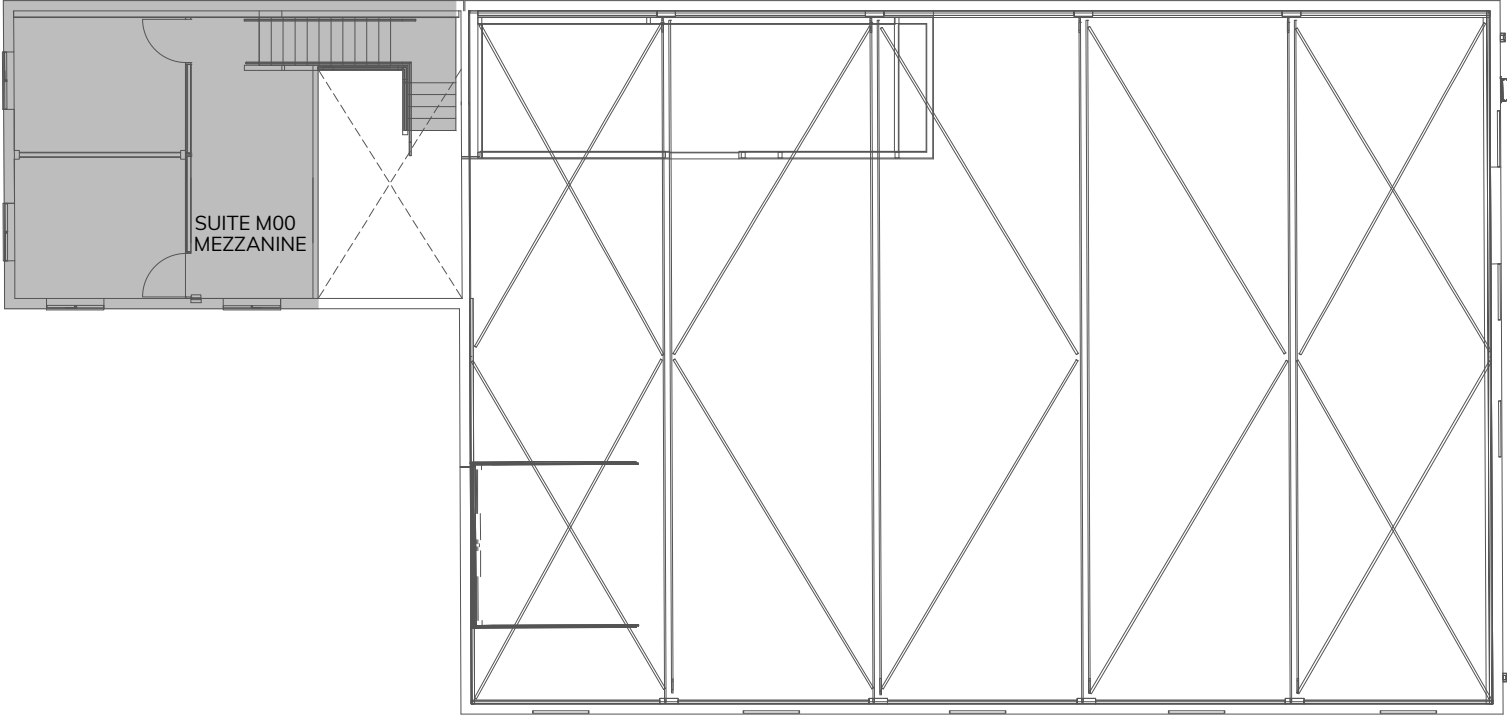
EXTERIOR PHOTOS



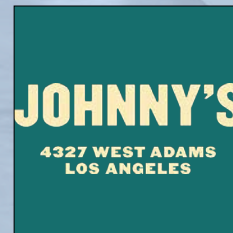
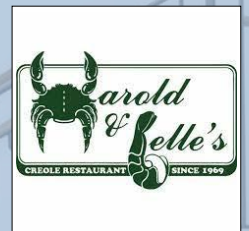
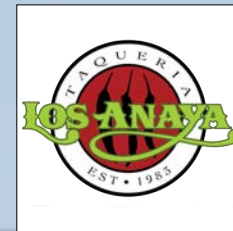
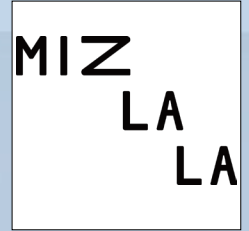
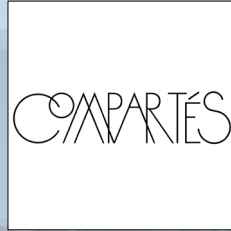
FLOOR PLAN - 1ST FLOOR



FLOOR PLAN - 2ND FLOOR



LOCAL AMENITIES



LOCAL OFFICES & DEVELOPMENTS

SOMESUCH



Coming Soon

Mixed Use Development
150,000 SF
Coming Soon



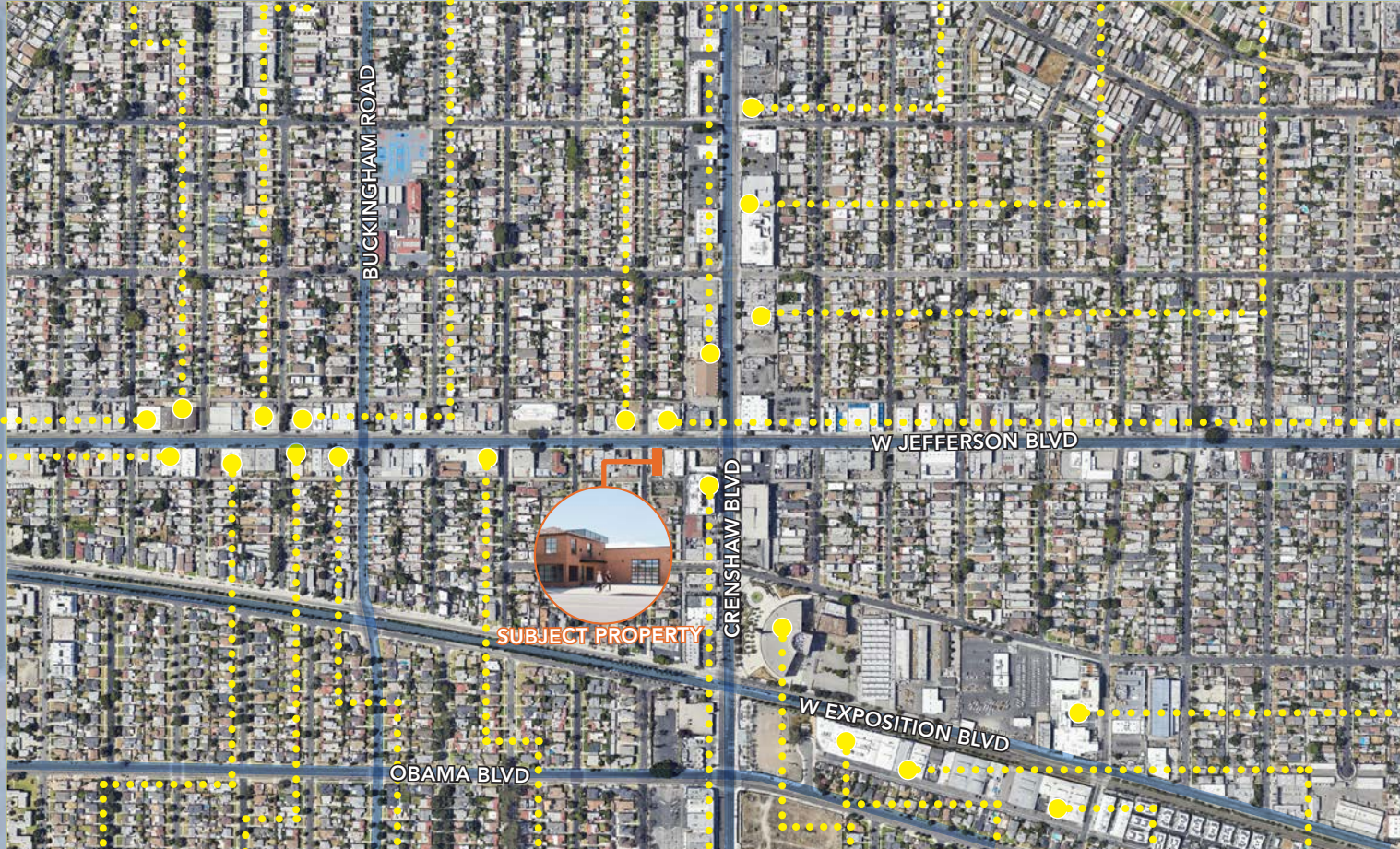
Three-Story
Office Building
Coming Soon



± 89,479 SF
For Lease



±10,274 SF Event
Venue Space
For Lease
Coming Soon



SUBJECT PROPERTY

HIGHLY LIKELY



High Wide & Handsome



±30,000 SF Building
Under Construction
For Lease
LWLA



±52,481 SF
New Development

ONWARD & UPWARD



RIOS



±29,759 SF Building
For Lease

FPM DEVELOPMENT, LLC

CONTACTS

VAUN LENNON

310.899.2713

vlennon@leewestla.com

AGT DRE 01993617

ROBERT CLIFFORD

310.899.2725

rclifford@leewestla.com

AGT DRE 00999184

Lee & Associates Los Angeles West, Inc.
1508 17th Street, Santa Monica, CA 90404
310.899.2700 | www.leewestla.com | DRE 01222000

No warranty or representation is made to the accuracy of the foregoing information.



A DIVISION OF
LEE & ASSOCIATES