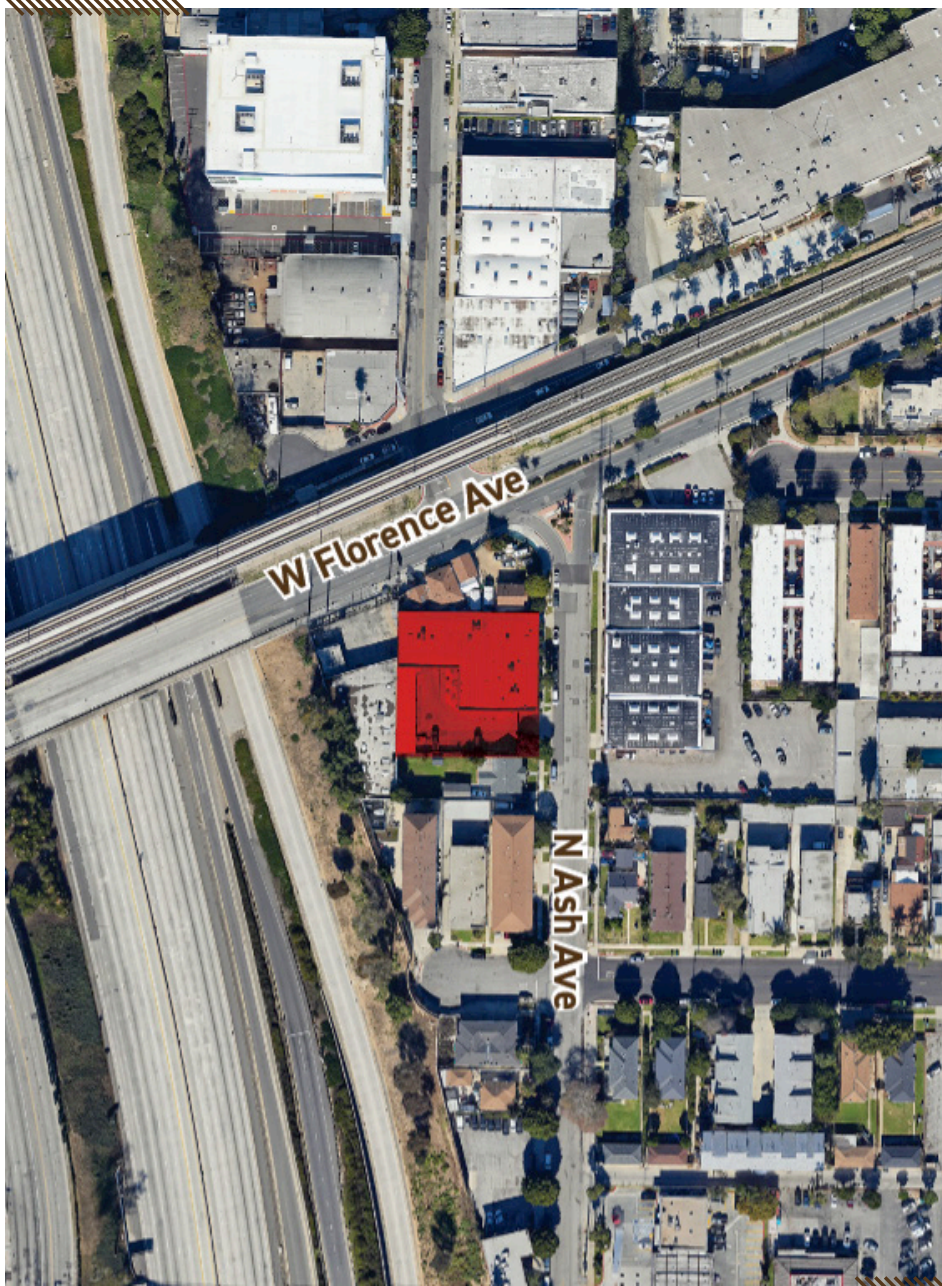


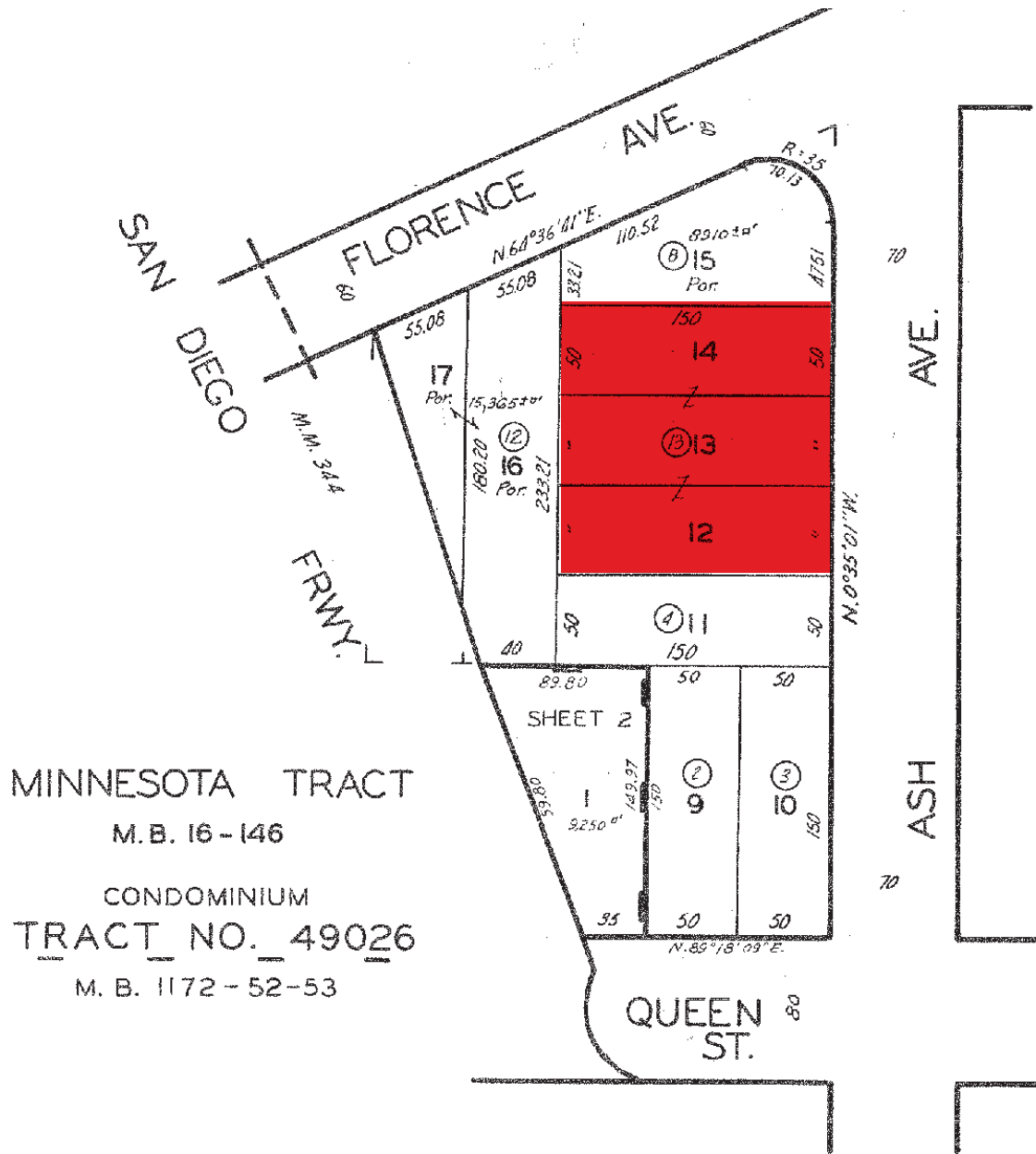
125 N Ash Avenue Inglewood, CA 90301





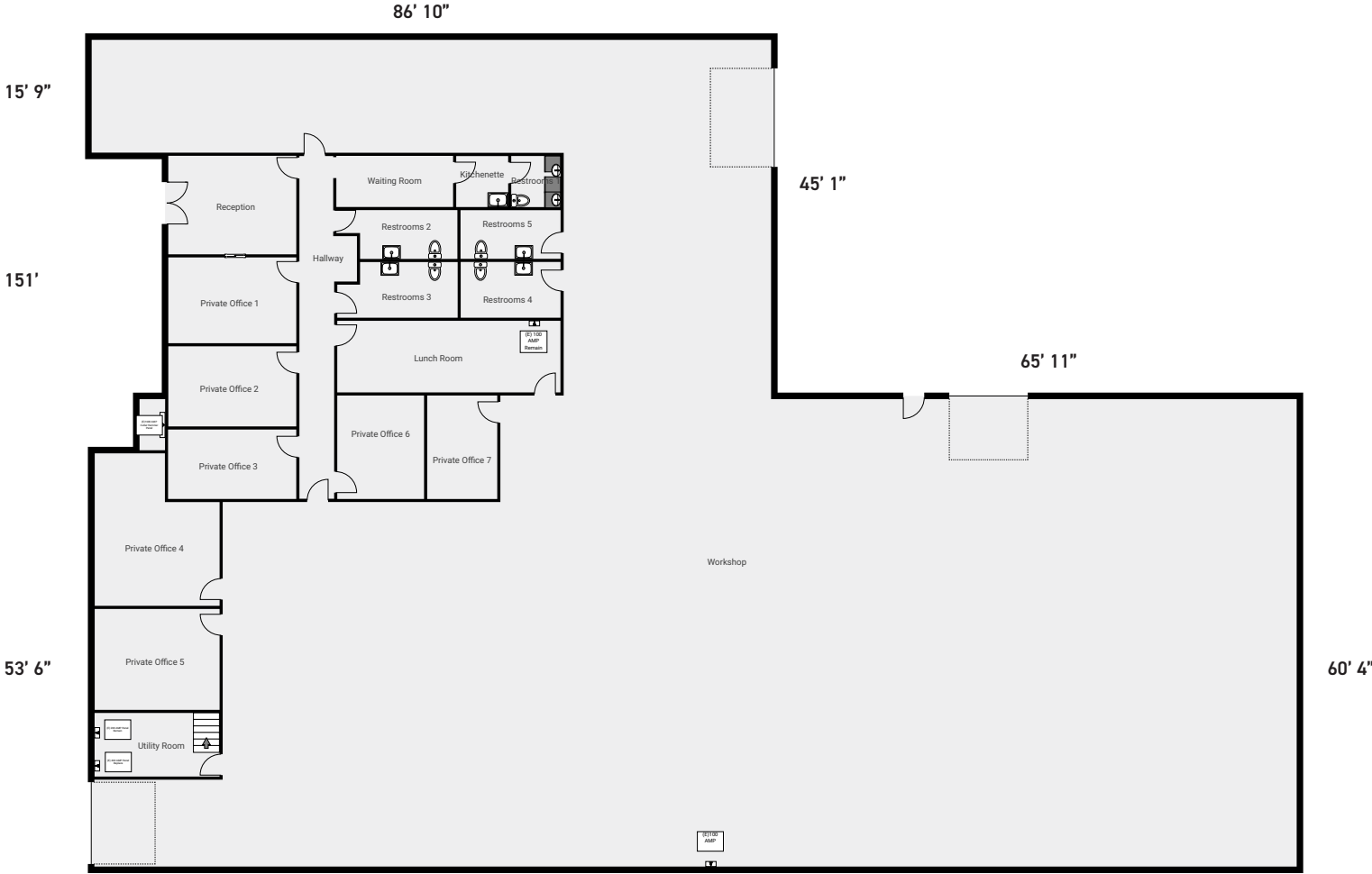
BUILDING SIZE	± 12,825 SF
LAND SIZE	± 21,780 SF
ZONING	INR3*
PARKING	18 On-Site Parking Spaces in Gated Lot 8 Covered
LEASE PRICE	\$1.50/SF, Net
FEATURES	<ul style="list-style-type: none">- 17' Clear- 3 Drive in Doors- 1600 AMP Power Supply 3 Phase (Main)- Fully Air Conditioned Office and Warehouse- Two 5 Ton HVAC Warehouse- One 5 Ton HVAC Offices- Newer LED Lighting- Gated and Private Yard- Built in 1969, Remodeled in 2022

PLAT MAP

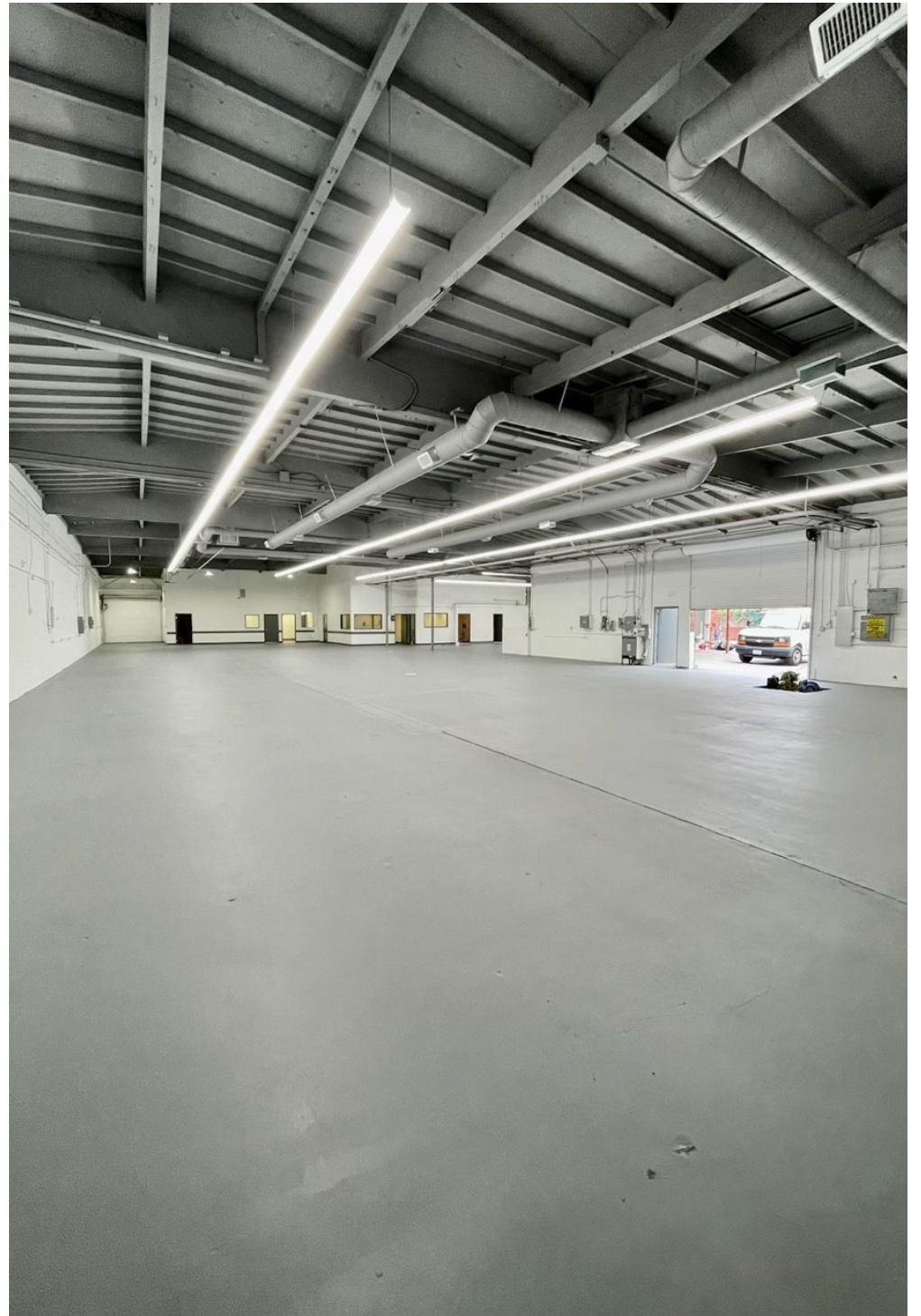
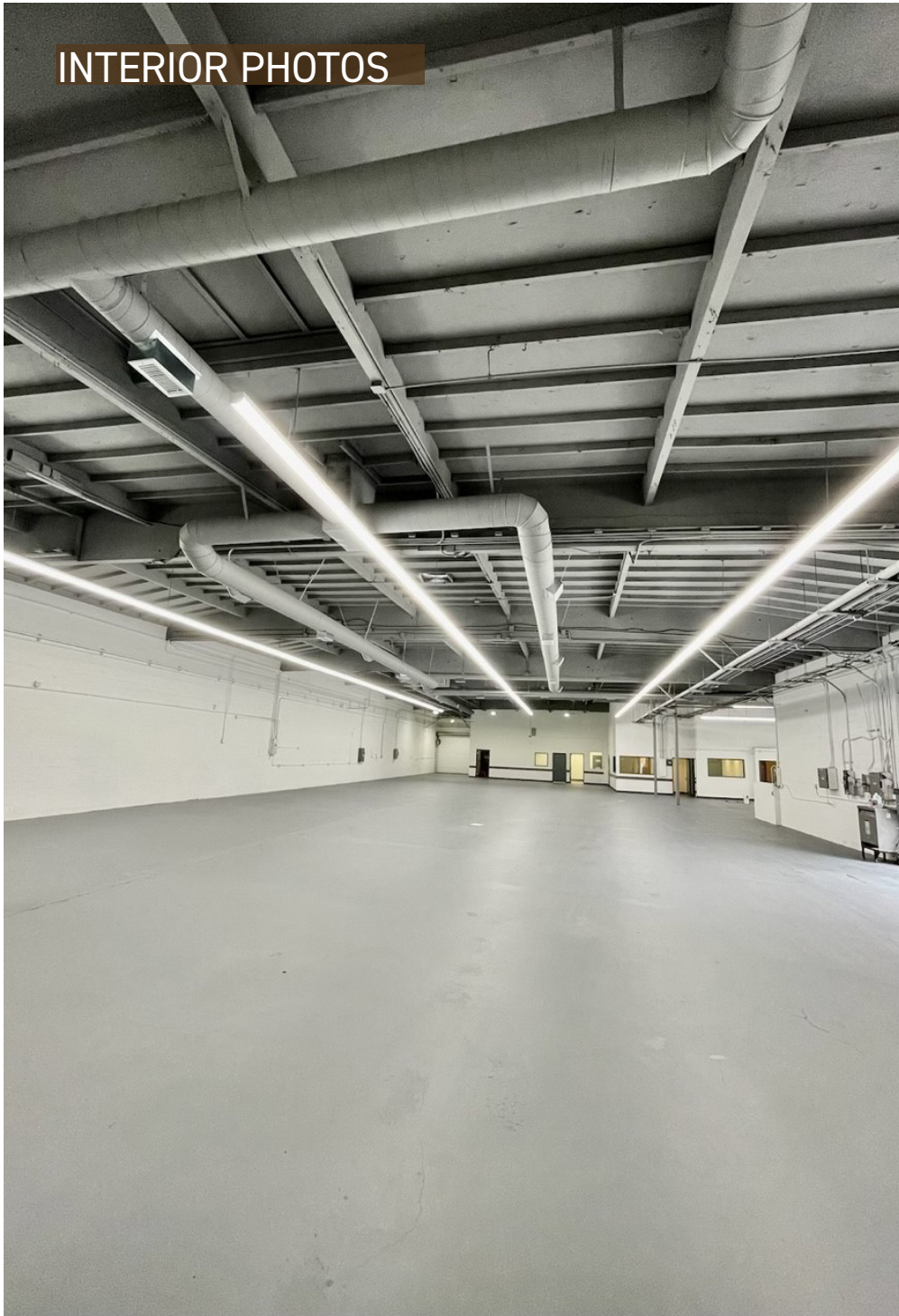


MINNESOTA TRACT
M.B. 16-146
CONDOMINIUM
TRACT_NO. 49026
M.B. 1172-52-53

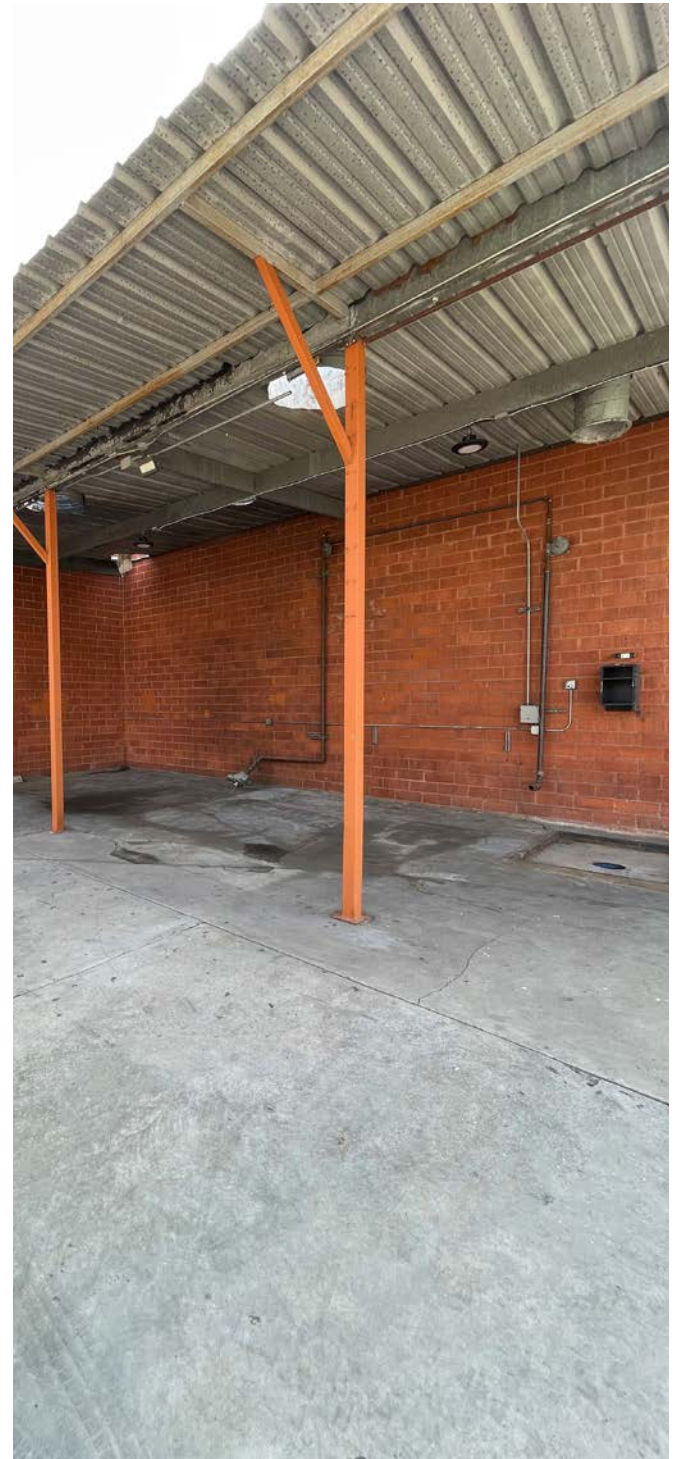
FLOOR PLAN



INTERIOR PHOTOS



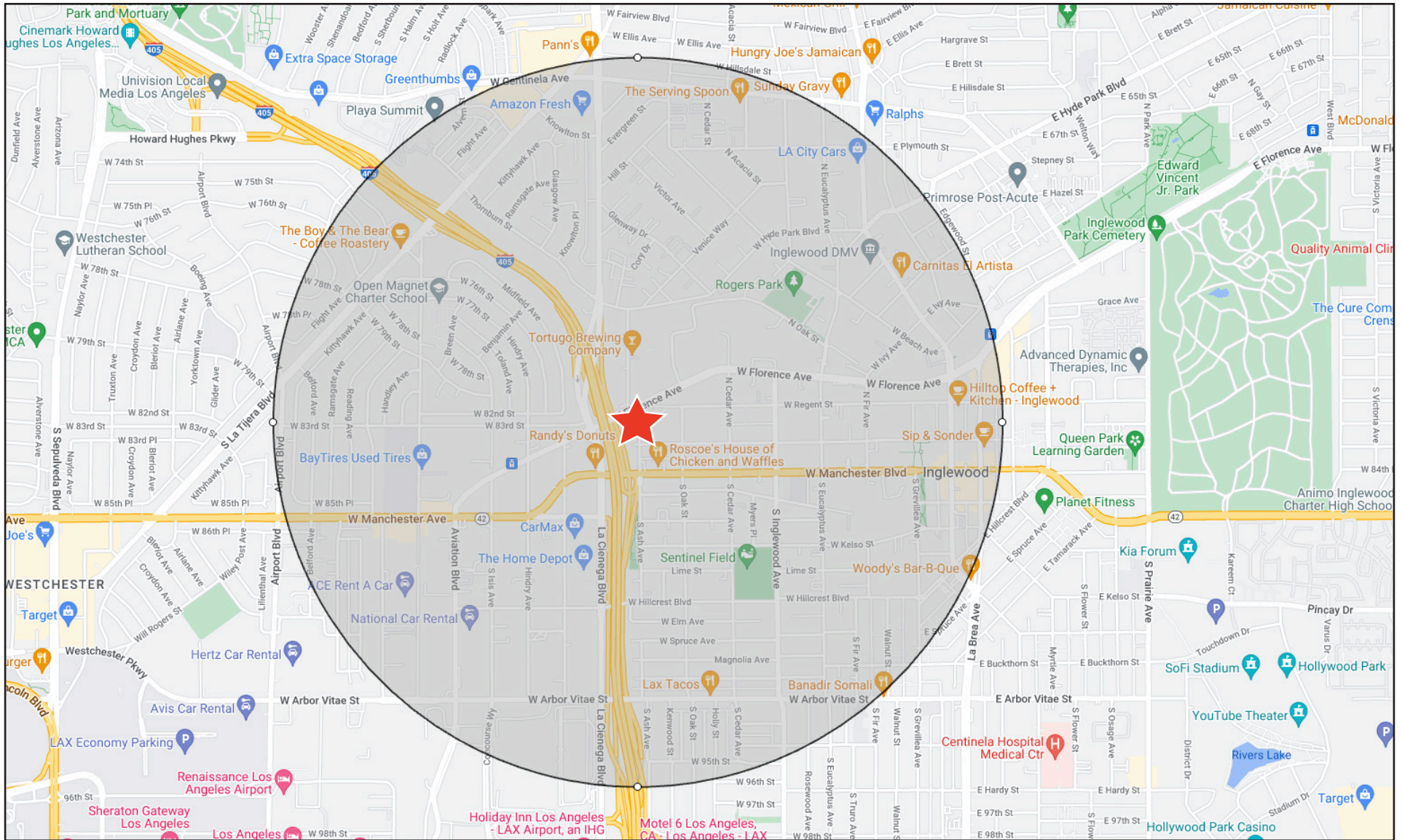
EXTERIOR PHOTOS



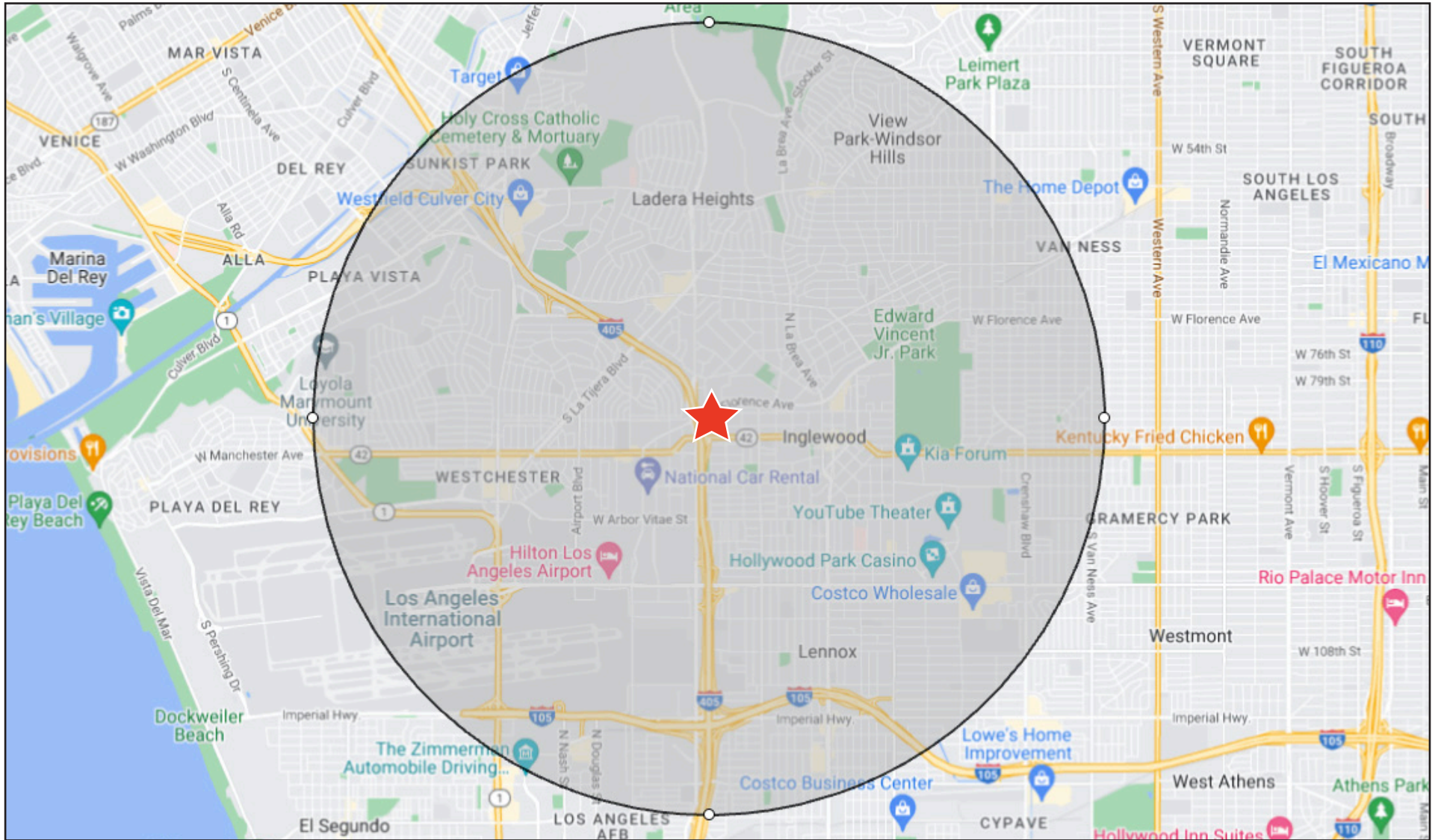
AERIAL MAP



RADIUS MAP - 1 MILE



RADIUS MAP - 3 MILES



NEARBY AMENITIES



CONTACT



Douglas R. Marshall, SIOR
310.899.2745
dmarshall@leewestla.com
BKR DRE 00869275



Ian Ameche
310.899.2748
iameche@leewestla.com
BKR DRE 01976053



Alex Rivera
310.899.2742
arivera@leewestla.com
BKR DRE 01328712

310.899.2700 | WWW.LEEWESTLA.COM | DRE 01222000

No warranty or representation is made to the accuracy of the foregoing information.
Terms of sale or lease are subject to change or withdrawal without notice.

