



Table of Contents

- 03 Executive Summary
- 04 Property Description
- 07 Building Details
- 08 Property Specs
- 09 Neighborhood Map
- 10 Neighborhood Amenities
- 11 Contacts

Contacts

Aleks Trifunovic, SIOR
President
310.899.2721
atrifunovic@leewestla.com

Thomas Isola
Principal
310.899.2709
tisola@leewestla.com

Tibor Lody, SIOR
Principal
310.899.2720
tlody@leewestla.com

Keith Fielding
Principal
310.899.2719
kfielding@leewestla.com

Adam Levine
Associate
310.899.2703
alevine@leewestla.com





Property Description

Address

5830 Obama Blvd., Los Angeles, CA 90016

Occupancy

Delivered Vacant Upon Close of Escrow Sale

RSF

40,000

Built/Renovated

1967/2018

Pricing

Call for Details

Zoning

C4

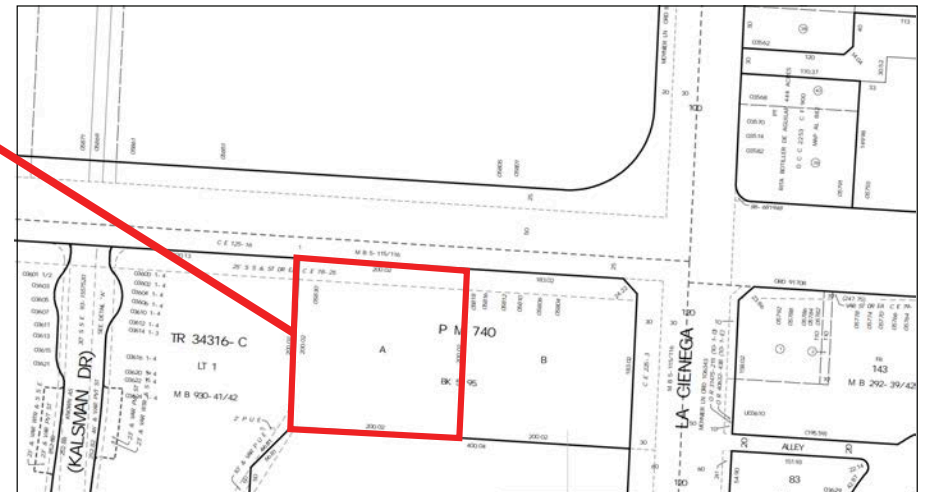
Lot Size

39,981

Highlights

Parking

- Leaseback Potential for a Single Floor
- Seller Financing Available
- 71 Surface Parking Spaces
- 96 Spaces Available with Valet Assist



Executive Summary

5830 Obama Boulevard presents the rare opportunity to acquire a first-class compound in close proximity to some of the most prolific tech and media companies in the world. The property is located on Obama Blvd., one property West of La Cienega Blvd., and in the Jefferson Creative Office Corridor/Hayden Tract - one of the hottest submarkets on Los Angeles' Westside.

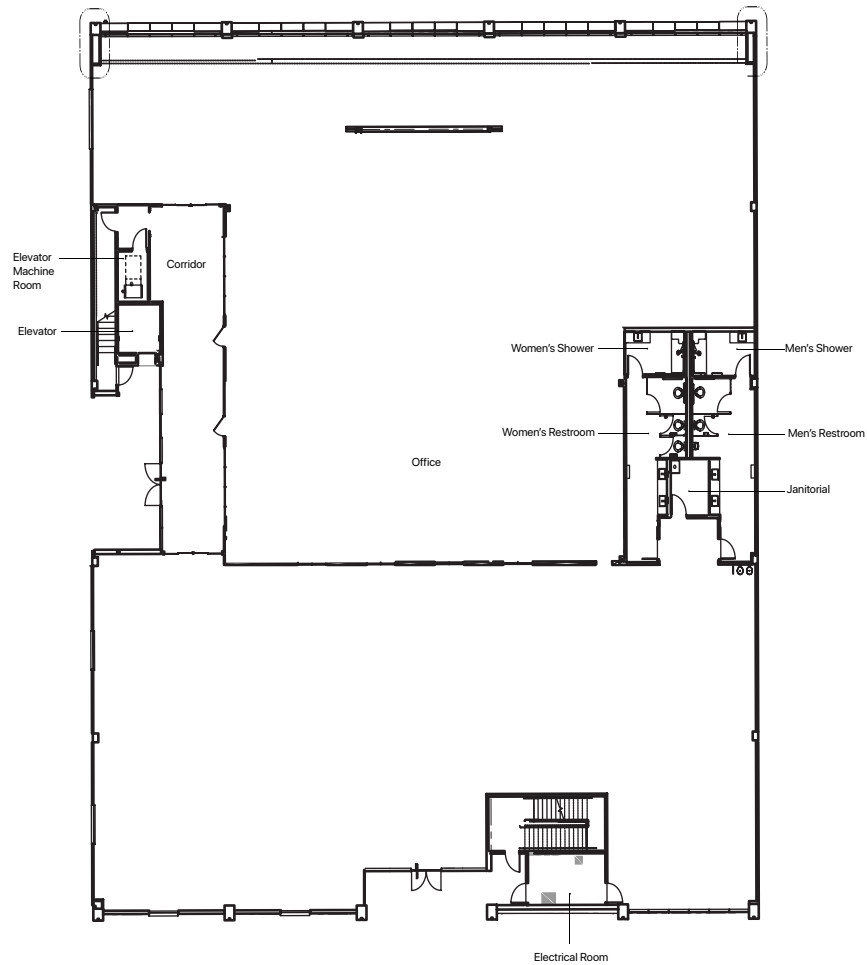
The building was renovated in 2018 and sits at 40,000 square feet with a spacious indoor/outdoor environment. Shubin + Donaldson were the architects of the project. The building has a modern facade and each level has floor to ceiling windows offering great natural light throughout the interior. The open floor plan lends itself to endless layout possibilities.

The building will be delivered vacant upon the close of escrow and seller financing is available. There is potential to lease back a single floor for additional income. The site is located near the Ballona Creek bike path which provides easy access to Marina del Rey, Santa Monica and the South Bay beach cities.

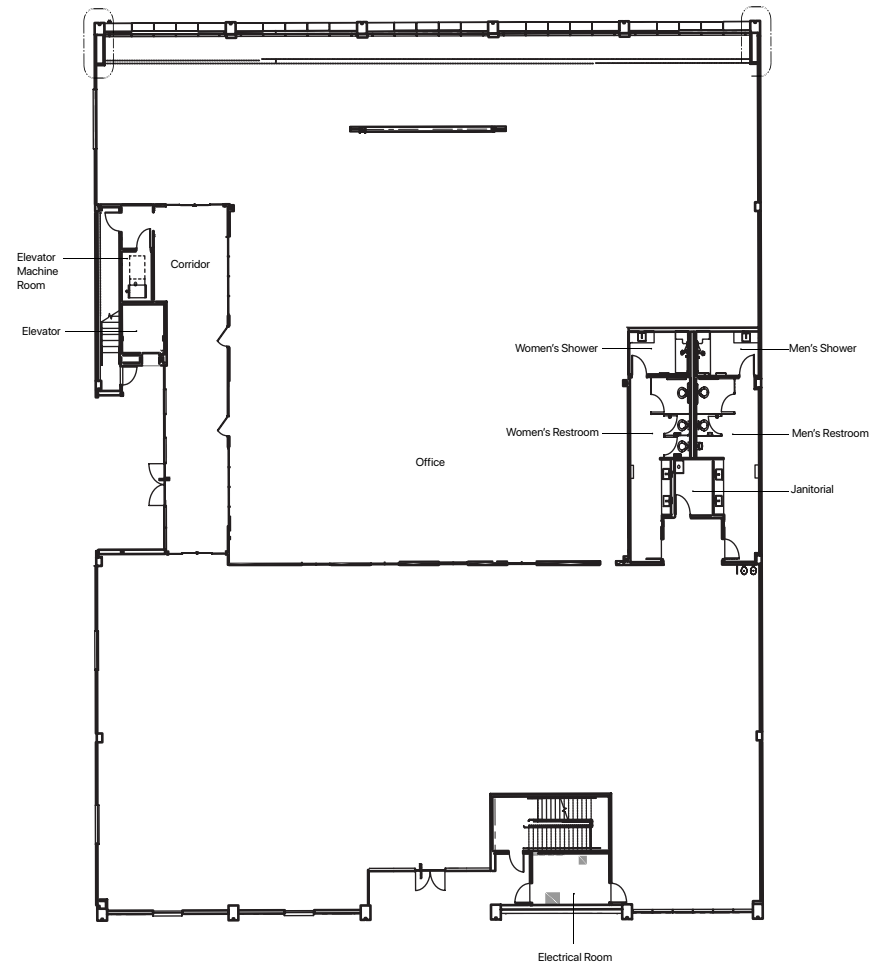


Floor Plans

First Floor



Second Floor

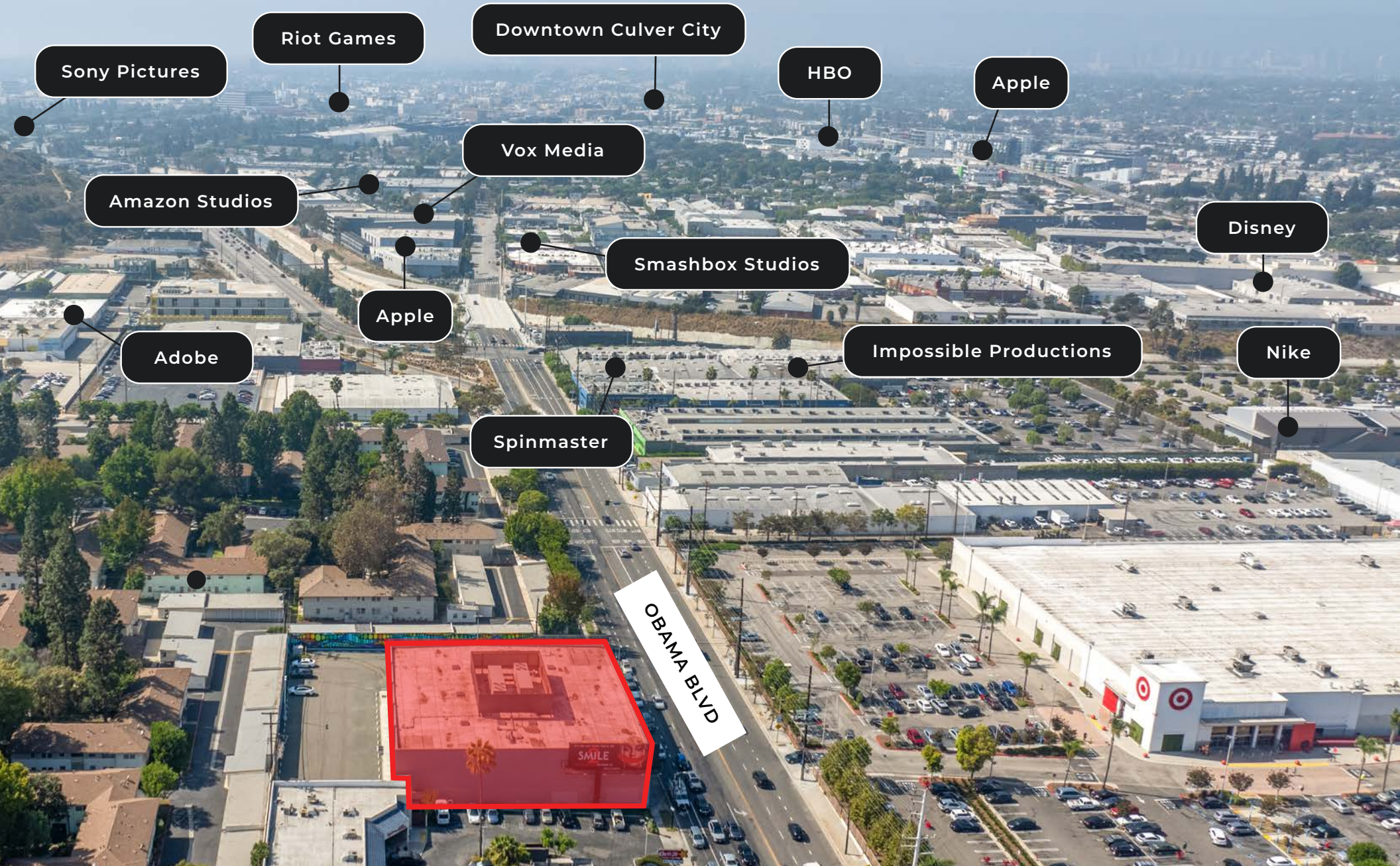






Building Details

Tenant Map



Sony Pictures

Riot Games

Downtown Culver City

HBO

Apple

Amazon Studios

Vox Media

Disney

Smashbox Studios

Apple

Adobe

Impossible Productions

Nike

Spinmaster

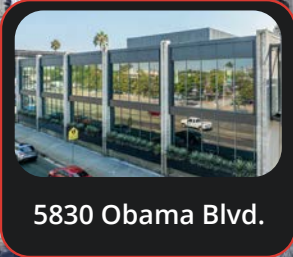
OBAMA BLVD

SMILE

Parking



Neighborhood Amenities



5830 Obama Blvd.



Aleks Trifunovic, SIOR
President
310.899.2721
atrifunovic@leewestla.com
BKR DRE 01363109



Thomas Isola
Principal
310.899.2709
tisola@leewestla.com
AGT DRE 01974024



Tibor Lody, SIOR
Principal
310.899.2720
tlody@leewestla.com
AGT DRE 01261129



Keith Fielding
Principal
310.899.2719
kfielding@leewestla.com
AGT DRE 01729915



Adam Levine
Associate
310.899.2703
alevine@leewestla.com
AGT DRE 02104830

Lee & Associates | Los Angeles West, Inc.
1508 17th Street
Santa Monica, California 90404

