

3515 Eastham Drive Culver City, CA



Property Information

PREMISES

26,408 SF

RENT

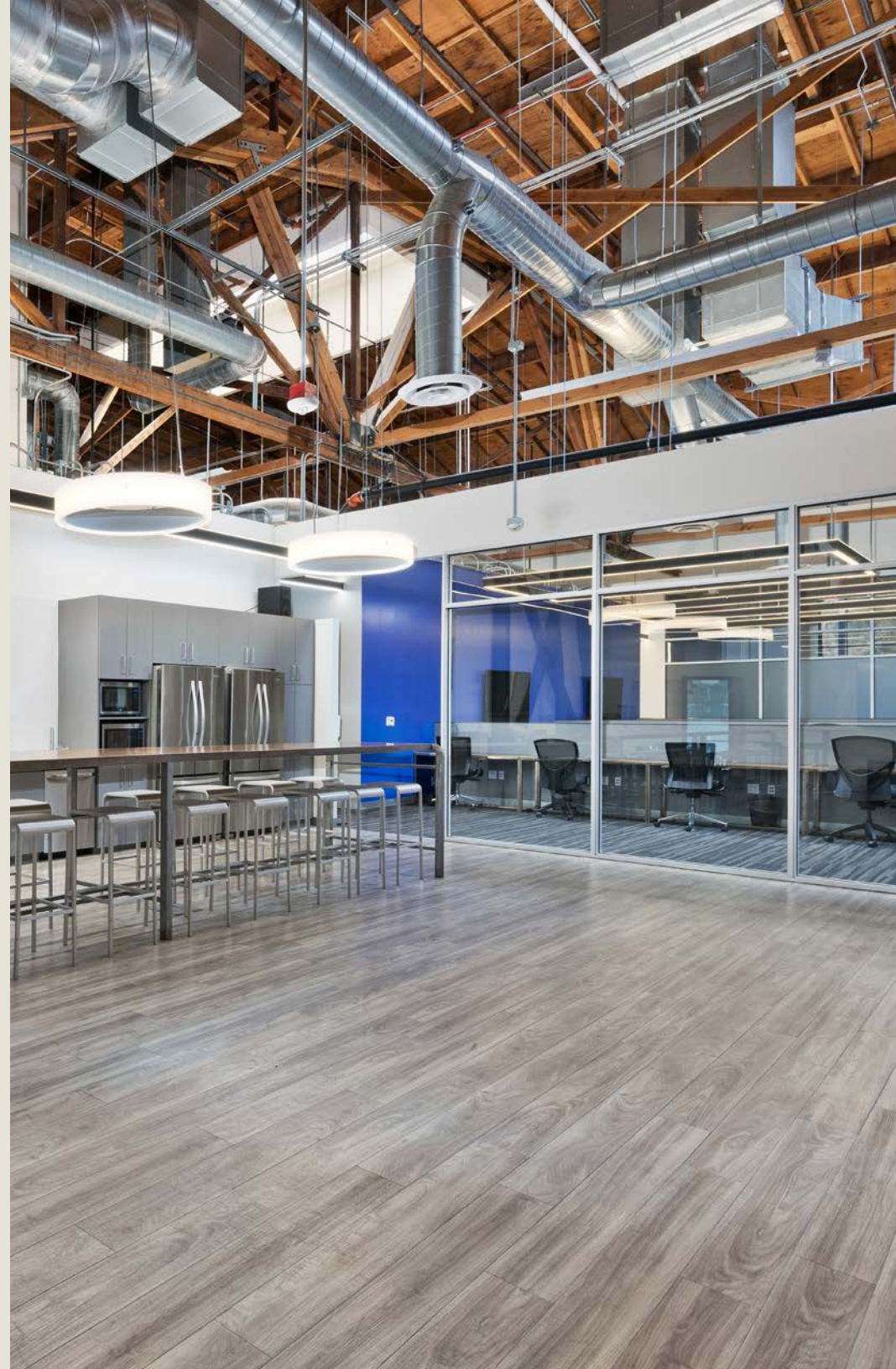
Call agent

OCCUPANCY

Upon lease execution

PROPERTY FEATURES

- 26,408 SF Office & Production Space
- High Volume, Bow Truss, Wood Beam Ceiling
- 1200 amps, 277/480v and HVAC Systems (+/-100 tons)
- Server Room with Supplemental HVAC
- Collaborative Workspaces & Conference Rooms
- Kitchen Area
- Restrooms with Shower
- Dedicated Parking: 48 Spaces
- 37 On-Site, 11 Off-Site (Additional Parking Available in the Area)
- Covered Loading Dock with Roll-up Door





Studio/Production Space

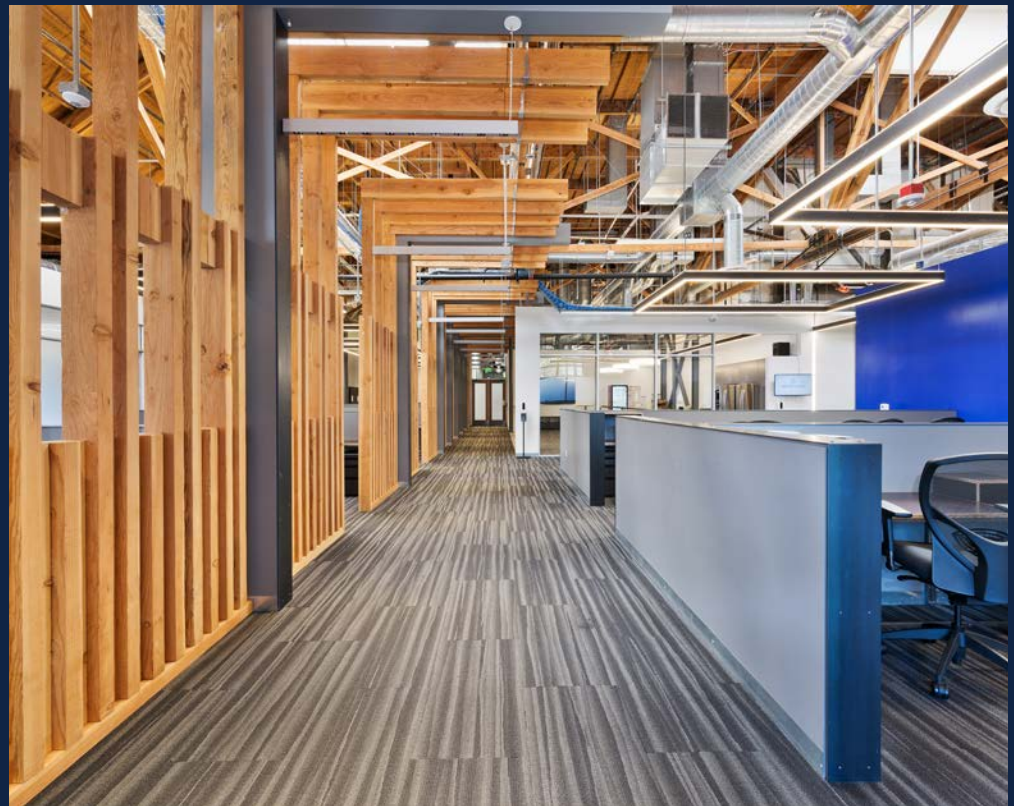
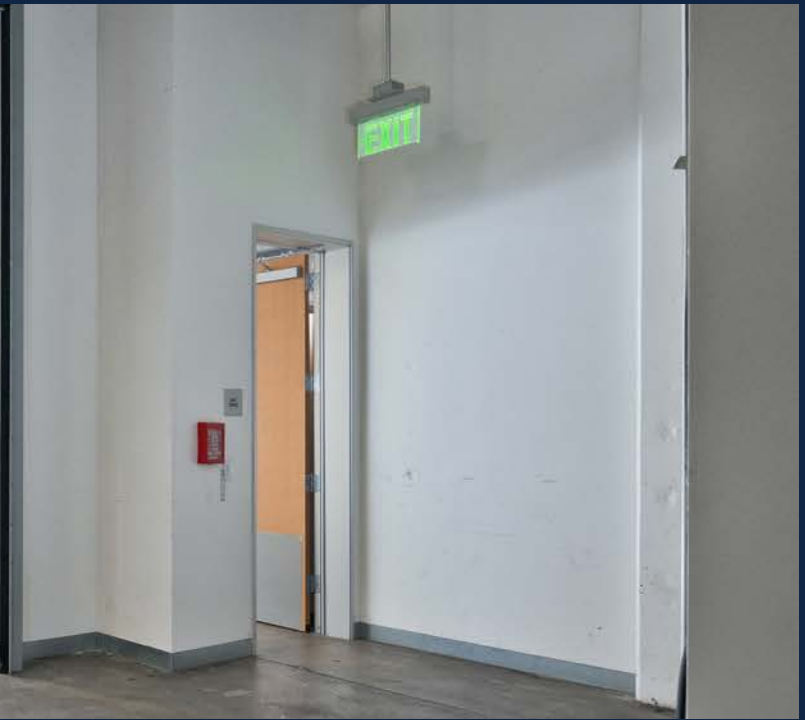
STUDIO/PRODUCTION SPACE FEATURES

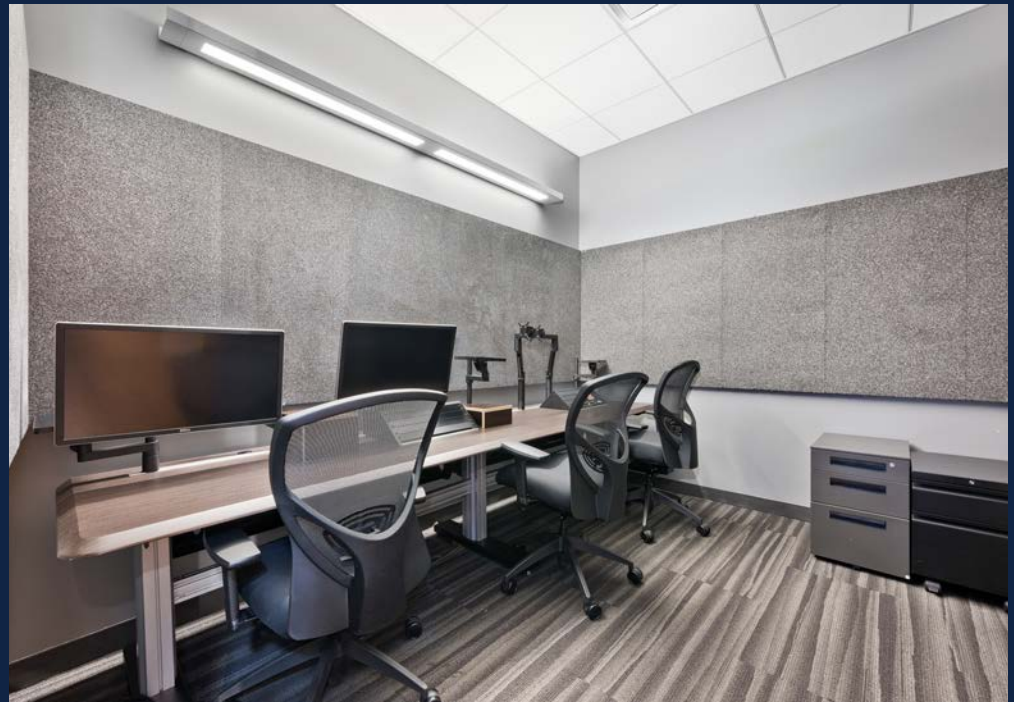
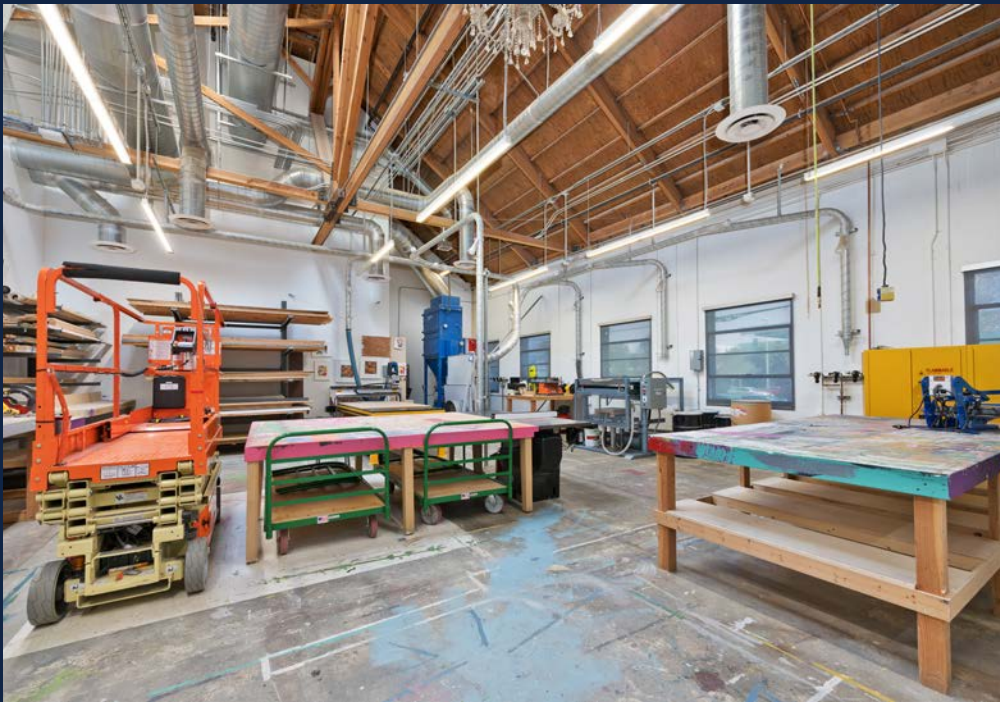
- High Volume, Bow Truss, Wood Beam Ceiling
- Upgraded Power and HVAC Systems
- Server Room with Supplemental HVAC
- Collaborative Workspaces & Conference Rooms
- Kitchen Area
- Restrooms with Shower
- Dedicated Parking: 48 Spaces
- 37 On-Site, 11 Off-Site (Additional Parking Available in the Area)
- Covered Loading Dock with Roll-up Door

SHOP / MILL AREA

- CNC Router (Potentially Available Separately)
- Dust Filtration System
- AQMD Permitted Spray Booth





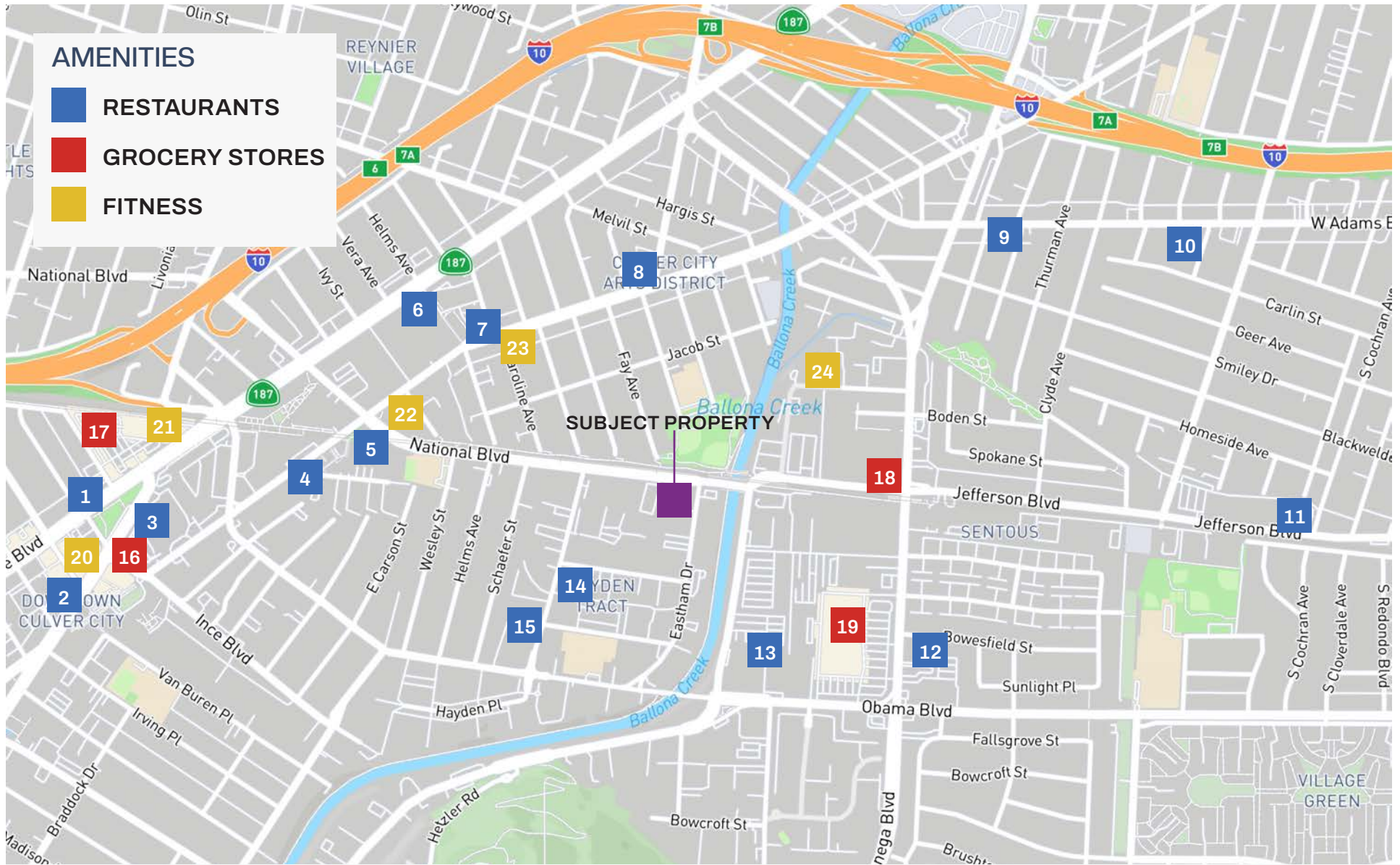


Floor Plan

PREMISES

26,408 SF





- | | | | | | |
|--------------------------------|--------------------------|---------------------------------|--------------------------|--------------------------|-------------------------|
| 1 IN N OUT | 5 MARGOT | 9 MU.SO COFFEE | 13 JACKSON'S CAFE | 17 SPROUTS | 21 PURE BARRE |
| 2 CITIZEN PUBLIC MARKET | 6 FATHER'S OFFICE | 10 FARMHOUSE KITCHEN | 14 DESTROYER | 18 WHOLE FOODS | 22 ORANGETHEORY |
| 3 THE BROTHERS SUSHI | 7 PASTA SISTERS | 11 NOURMANDIE BAKERY | 15 VESPERTINE | 19 TARGET GROCERY | 23 TRAINING MATE |
| 4 BIANCA | 8 MONROE PLACE | 12 QUEBOBS MEDITERRANEAN | 16 TRADER JOE'S | 20 EQUINOX | 24 GYM TONIC |



Contact Information



Keith Fielding

Principal
310.899.2719
kfielding@leewestla.com
AGT DRE 01729915



Tibor Lody

Principal
310.899.2720
tlody@leewestla.com
AGT DRE 01261129



Aleks Trifunovic, SIOR

President
310.899.2721
atrifunovic@leewestla.com
BKR DRE 01363109



Tommy Isola

Principal
310.899.2709
tisola@leewestla.com
AGT DRE 01974024



Adam Levine

Associate
310.899.2703
alevine@leewestla.com
AGT DRE 02104830

LEE & ASSOCIATES
LOS ANGELES WEST, INC.

⋮ 1508 17th Street, Santa Monica, CA
⋮
⋮ 310.899.2700 | www.leewestla.com

