



www.leewestla.com | dre 01222000

CREATIVE OFFICE FOR LEASE

4201 Redwood Avenue, Los Angeles, CA 90066

- PREMISES** 10,930 SF
- RENT** \$2.50 SF NNN (\$0.22/SF)
- OCCUPANCY** Immediate
- TERM** 3+ Years
- PARKING** 15 Parking Spaces (\$100/Car/Month)
- FEATURES**
 - Open Creative/Flex Space
 - Exposed Ceilings
 - Skylights
 - Outdoor Patio Areas
 - 2 Conference Rooms, Kitchen, Restrooms, Storage Areas
 - 100% HVAC
 - Ideal for Designers, Architects, Tech, Private Training Studios
 - Great Location with Easy Access to the 90 and 405 Freeways
 - Walk Score of 84 with Many Amenities in Walking Distance

CONTACT

Tibor Lody, SIOR

Principal
310.899.2720
tlody@leewestla.com
BKR DRE 01261129

Keith Fielding

Principal
310.899.2719
kfielding@leewestla.com
BKR DRE 01729915

Adam Levine

Associate
310.899.2703
alevine@leewestla.com
BKR DRE 02104830

Aleks Trifunovic, SIOR

President
310.899.2721
atrifunovic@leewestla.com
BKR DRE 01363109

Thomas Isola

Principal
310.899.2709
tisola@leewestla.com
BKR DRE 01974024

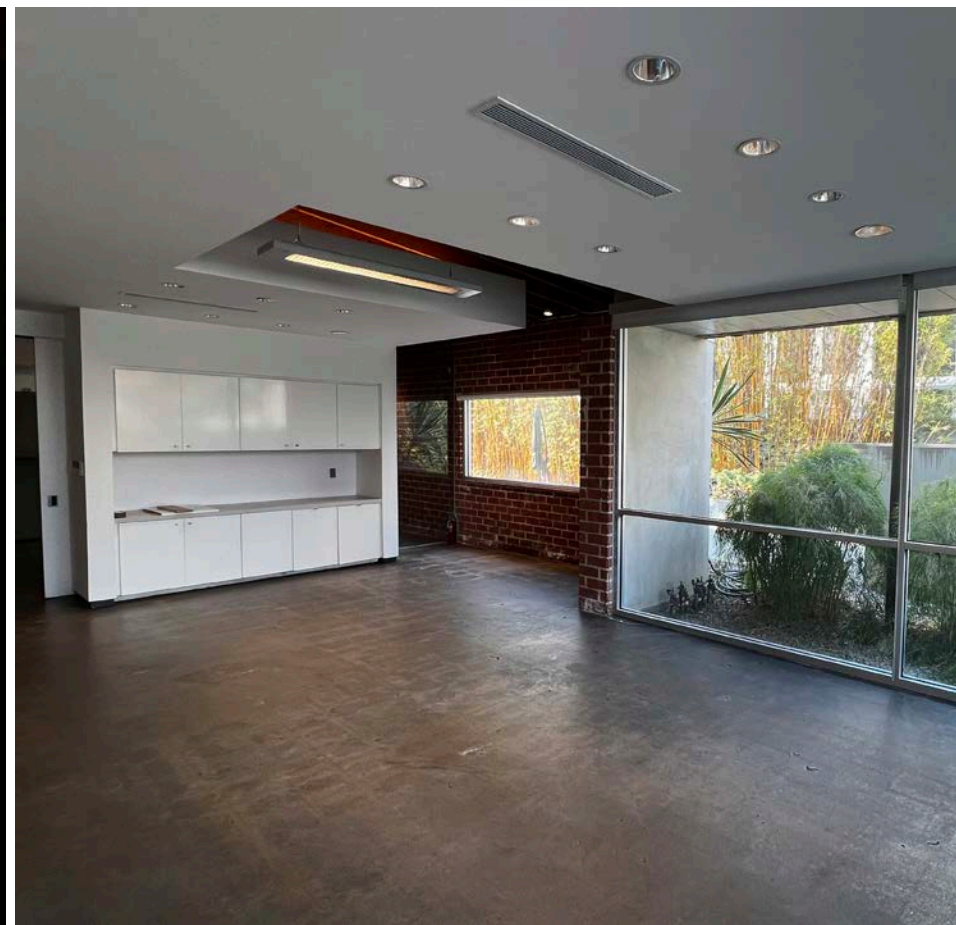
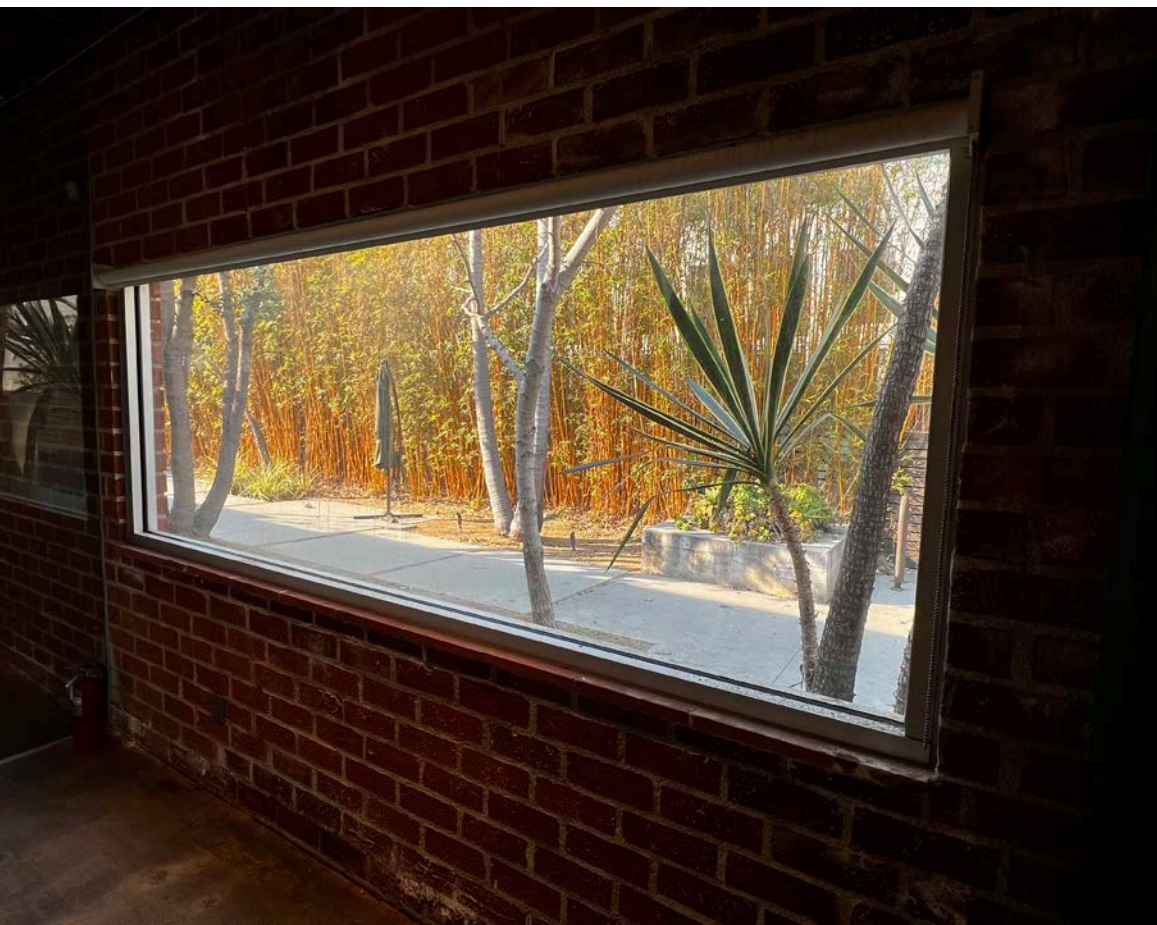


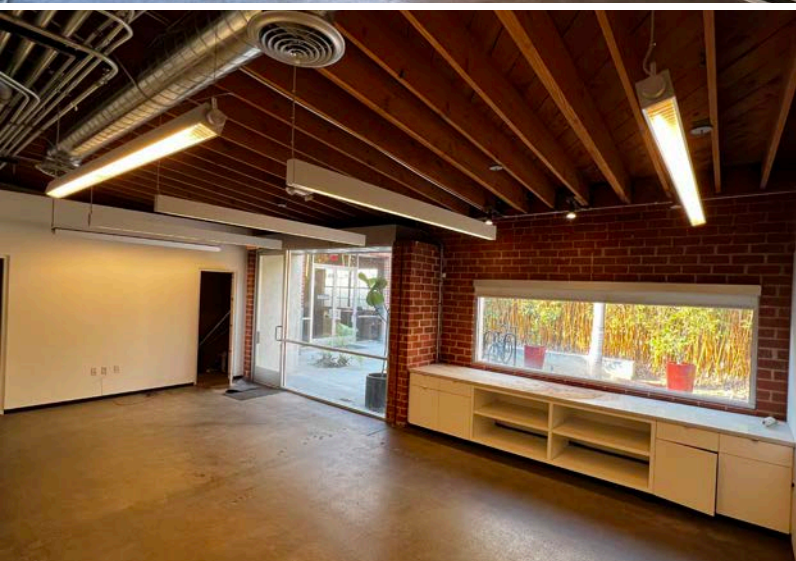
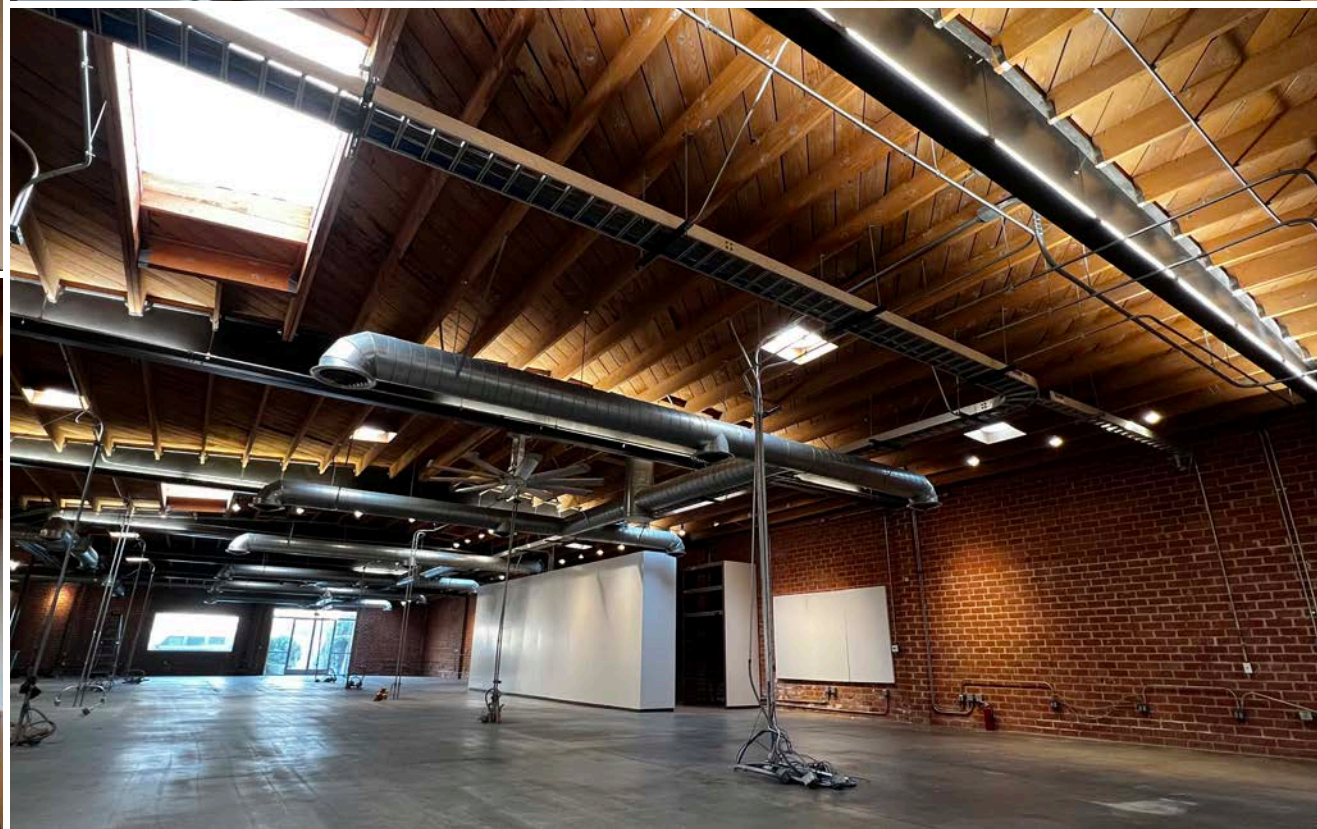
A DIVISION OF



No warranty or representation is made to the accuracy of the foregoing information. Terms of sale or lease are subject to change or withdrawal without notice.







MAJOR TENANTS





TIBOR LODY, SIOR

310.899.2720

tlody@leewestla.com

AGT DRE 01261129

ALEKS TRIFUNOVIC, SIOR

310.899.2721

atrifunovic@leewestla.com

BKR DRE 01363109

KEITH FIELDING

310.899.2719

kfielding@leewestla.com

AGT DRE 01729915

TOMMY ISOLA

310.899.2709

tisola@leewestla.com

AGT DRE 01974024

ADAM LEVINE

310.899.2703

alevine@leewestla.com

AGT DRE 02104830



LEE &
ASSOCIATES

Lee & Associates Los Angeles West, Inc.
1508 17th Street, Santa Monica, CA 90404
310 899 2700
leewestla.com | DRE 01222000