



LAND/RETAIL SPACE AVAILABLE FOR SALE

5740 - 5754 W ADAMS BLVD  
LOS ANGELES, CA 90016

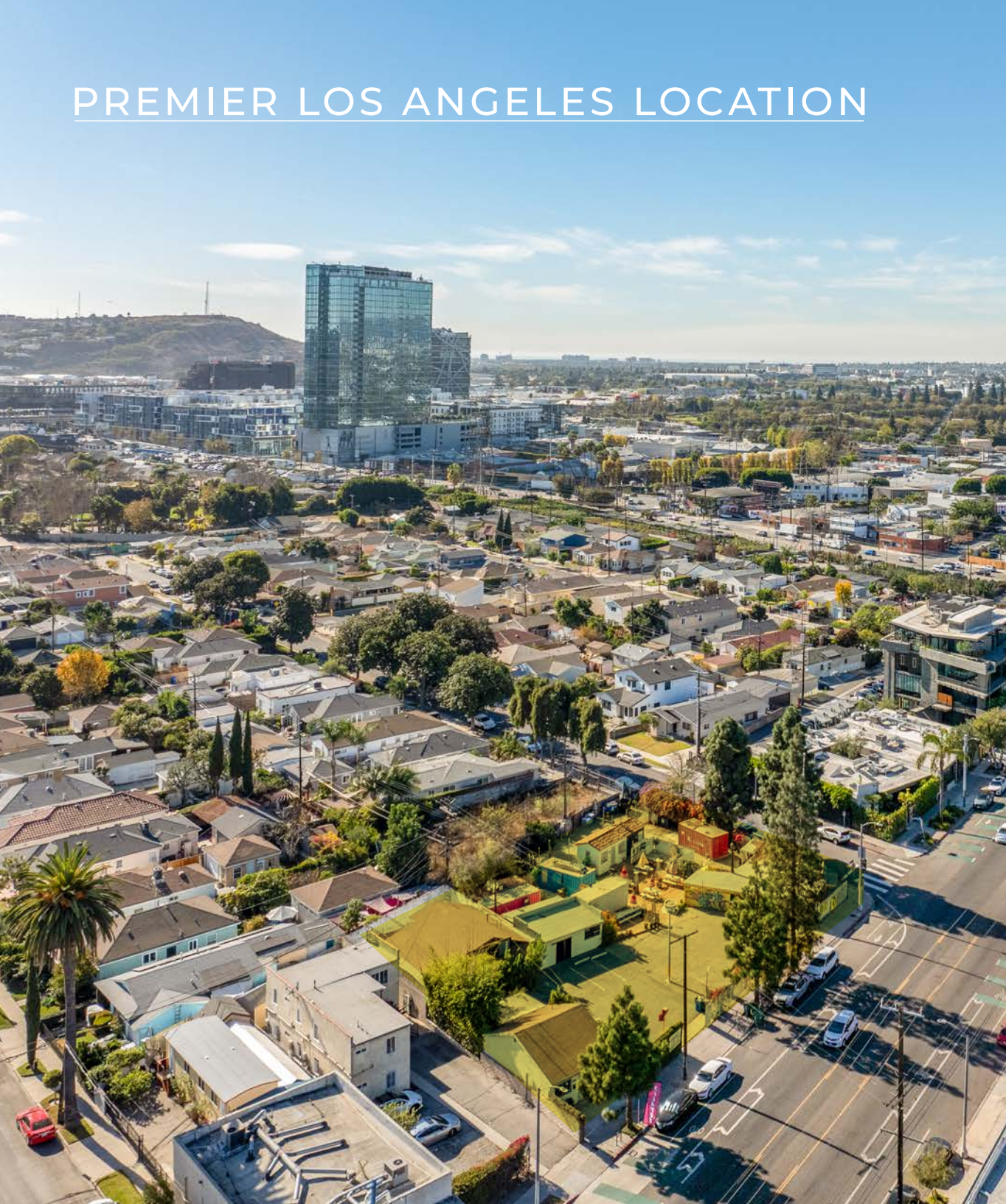


A DIVISION OF



LEE &  
ASSOCIATES

# PREMIER LOS ANGELES LOCATION



Located at 5740-5754 W Adams Blvd in Los Angeles, this premier property offers an exceptional investment opportunity in a highly desirable location. Situated on a prominent corner lot with excellent street frontage, the site is strategically positioned near the 10 Freeway, providing easy access to the broader Los Angeles region. The property's proximity to the vibrant Culver City Market enhances its appeal, offering a thriving mix of retail, dining, and cultural experiences within the immediate distance. This asset represents a rare chance to acquire a substantial piece of land in a bustling urban area, making it a compelling option for both immediate income generation and future value creation.

This property offers dual investment potential. In the short term, the existing retail spaces on-site can be utilized to generate steady cash flow. Over the long term, the site's development potential is amplified by significant density bonuses, making it ideal for a transformative project. The combination of location, accessibility, and redevelopment potential positions 5740-5754 W Adams Blvd as a strategic acquisition for investors seeking to maximize returns in one of Los Angeles' most dynamic markets.

# PROPERTY INFORMATION



## TOTAL BUILDING SF

± 2,445 SF

## DEVELOPABLE LAND SF

± 16,394 SF

## PRICE

\$3,500,000 ( \$213 PSF Land)

## OCCUPANCY

Immediate

## PARKING

Abundant Parking

## APN

5048-009-057,  
031,030,029,028

## FEATURES

- Short Term Leases
- Operational Food License
- Incredible Location
- Great Signage

## MULTIPLE DEVELOPMENT OPPORTUNITIES

- Retail Redevelopment
- 61,000 SF Commercial Development
- 44 Residential Units w/ TOC 3 bonus
- 125 Residential Units w/ ED1

*Buyer to verify development potential*

## CONTACTS

### Vaun Lennon

310.899.2713

[vlennon@leewestla.com](mailto:vlennon@leewestla.com)

AGT DRE 01993617

### Brett Colvin

310.899.2731

[bcolvin@leewestla.com](mailto:bcolvin@leewestla.com)

AGT DRE 02230987

### Robert Clifford

310.899.2725

[rclifford@leewestla.com](mailto:rclifford@leewestla.com)

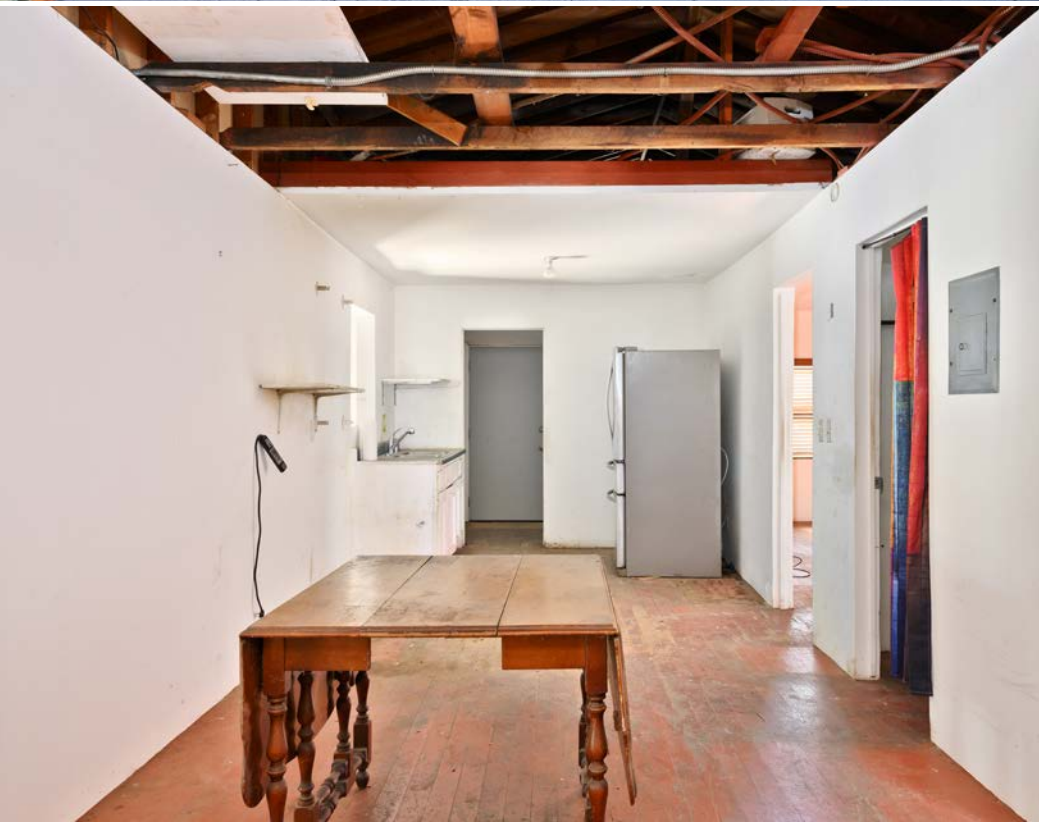
AGT DRE 00999184



# EXTERIOR PHOTOS



# INTERIOR PHOTOS



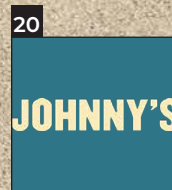
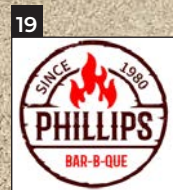
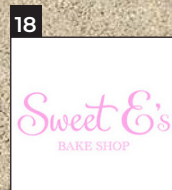
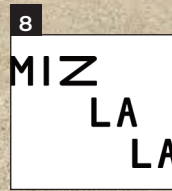
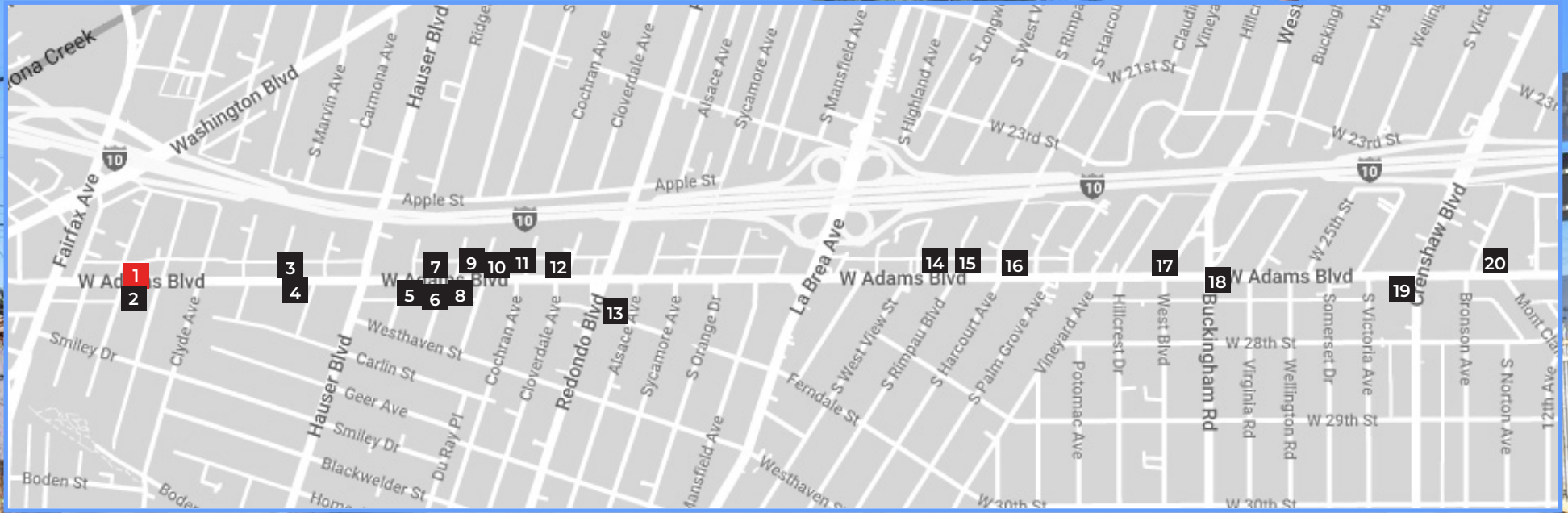
AERIAL SHOT



# NEARBY AMENITIES & FUTURE DEVELOPMENTS

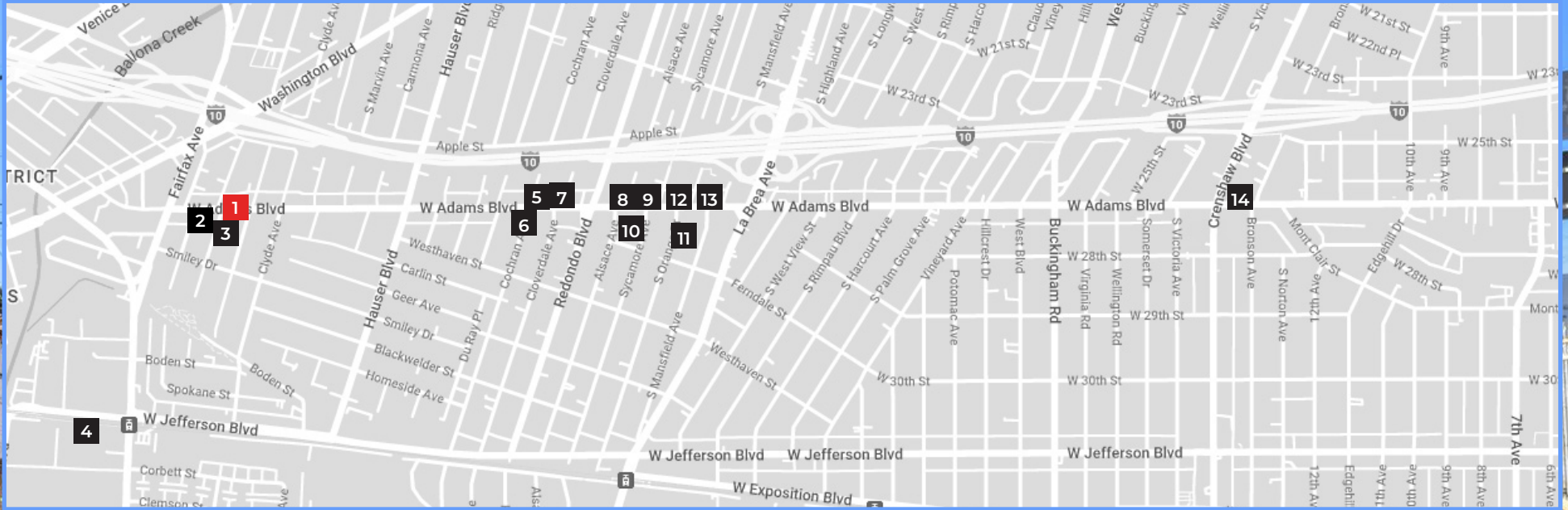


# WEST ADAMS AMENITIES

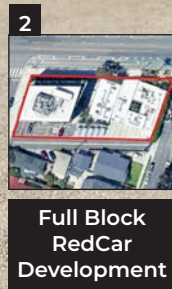




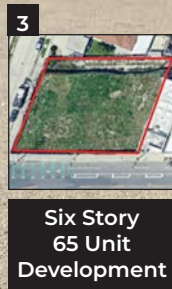
# NEARBY DEVELOPMENTS



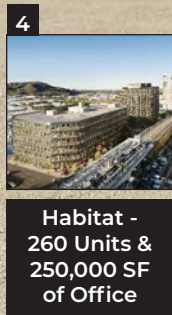
**Subject Property**



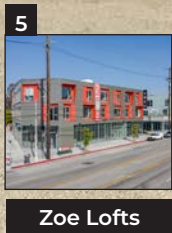
**Full Block RedCar Development**



**Six Story 65 Unit Development**



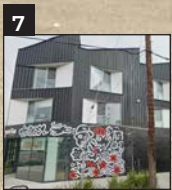
**Habitat - 260 Units & 250,000 SF of Office**



**Zoe Lofts**



**5300 W Adams**



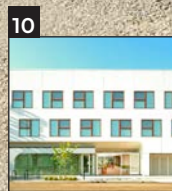
**5267 W Adams**



**2599 Alsace Ave**



**E on Adams**



**Alsace Hotel**



**5135 W Adams**



**Catalina West Adams**



**The Jayne**



**4347 W Adams**

**VAUN LENNON**  
310.899.2713  
vlennon@leewestla.com  
AGT DRE 01993617

**ROBERT CLIFFORD**  
310.899.2725  
rclifford@leewestla.com  
AGT DRE 00999184

**BRETT COLVIN**  
310.899.2731  
bcolvin@leewestla.com  
AGT DRE 02230987



Lee & Associates Los Angeles West, Inc.  
1508 17th Street, Santa Monica, CA  
310.899.2700 | www.leewestla.com | DRE 01222000

No warranty or representation is made to the accuracy of the foregoing information.