

An aerial photograph of a residential neighborhood in Los Angeles. A specific lot is outlined in red, containing several small buildings, a parking lot, and some trees. The surrounding area consists of typical suburban houses and streets with parked cars.

LAND/RETAIL SPACE AVAILABLE FOR SALE

5740 - 5754 W ADAMS BLVD
LOS ANGELES, CA 90016

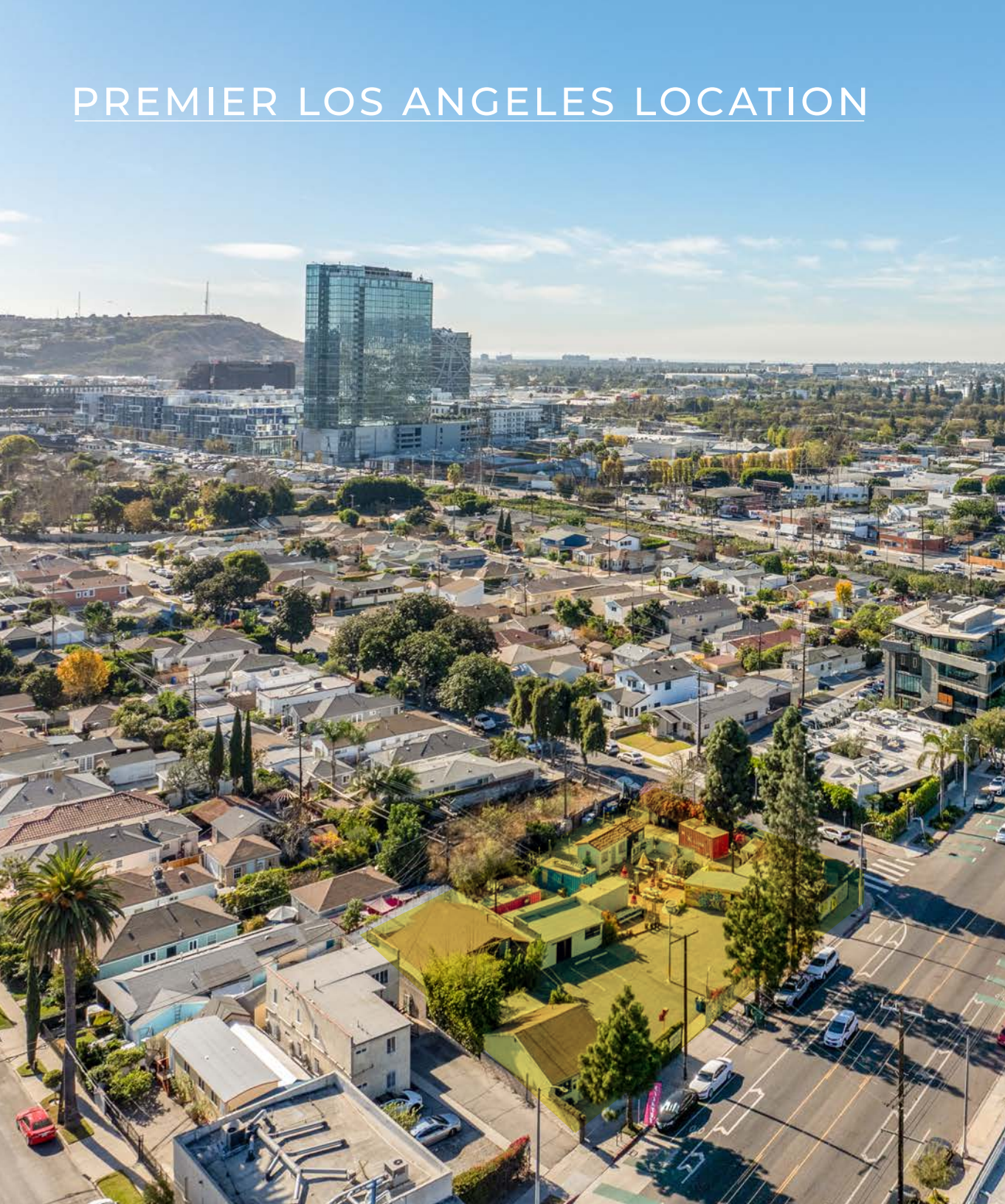


A DIVISION OF



LEE &
ASSOCIATES

PREMIER LOS ANGELES LOCATION



Located at 5740-5754 W Adams Blvd in Los Angeles, this premier property offers an exceptional investment opportunity in a highly desirable location. Situated on a prominent corner lot with excellent street frontage, the site is strategically positioned near the 10 Freeway, providing easy access to the broader Los Angeles region. The property's proximity to the vibrant Culver City Market enhances its appeal, offering a thriving mix of retail, dining, and cultural experiences within the immediate distance. This asset represents a rare chance to acquire a substantial piece of land in a bustling urban area, making it a compelling option for both immediate income generation and future value creation.

This property offers dual investment potential. In the short term, the existing retail spaces on-site can be utilized to generate steady cash flow. Over the long term, the site's development potential is amplified by significant density bonuses, making it ideal for a transformative project. The combination of location, accessibility, and redevelopment potential positions 5740-5754 W Adams Blvd as a strategic acquisition for investors seeking to maximize returns in one of Los Angeles' most dynamic markets.

PROPERTY INFORMATION



TOTAL BUILDING SF

± 2,445 SF

FEATURES

- Short Term Leases
- Operational Food License
- Incredible Location
- Great Signage

CONTACTS

Robert Clifford

310.899.2725

rclifford@leewestla.com

AGT DRE 00999184

Brett Colvin

310.899.2731

bcolvin@leewestla.com

AGT DRE 02230987

DEVELOPABLE LAND SF

± 16,394 SF

PRICE

\$3,500,000 (\$213 PSF Land)

OCCUPANCY

Immediate

MULTIPLE DEVELOPMENT OPPORTUNITIES

- Retail Redevelopment
- 61,000 SF Commercial Development
- 44 Residential Units w/ TOC 3 bonus
- 125 Residential Units w/ ED1

Buyer to verify development potential

PARKING

Abundant Parking

APN

5048-009-057,
031,030,029,028



EXTERIOR PHOTOS



INTERIOR PHOTOS



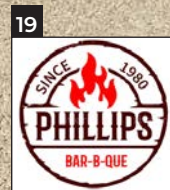
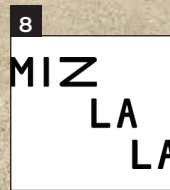
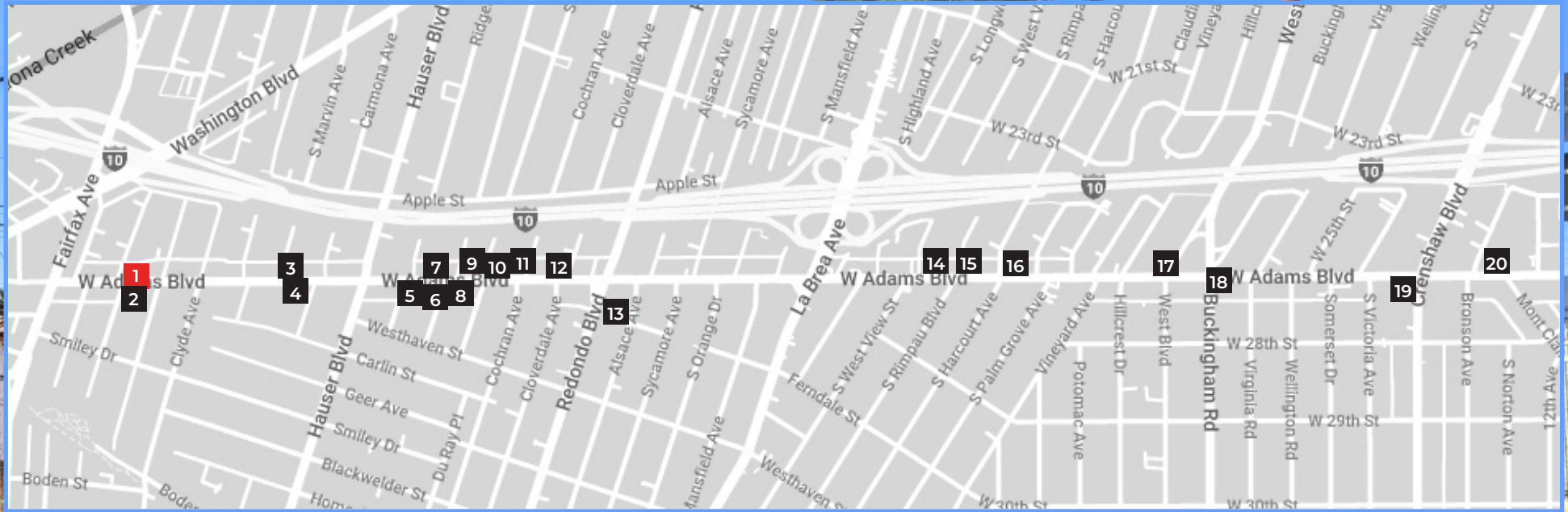
AERIAL SHOT



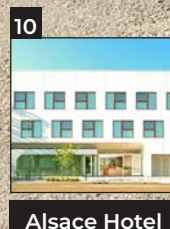
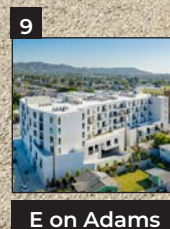
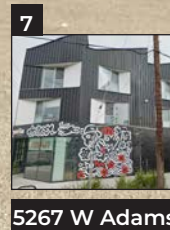
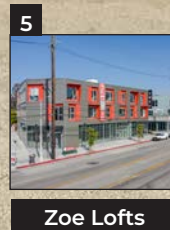
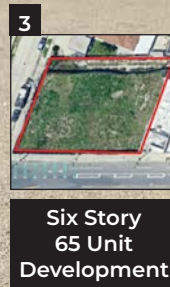
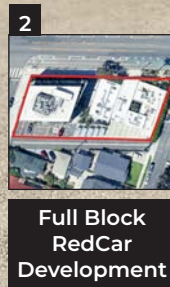
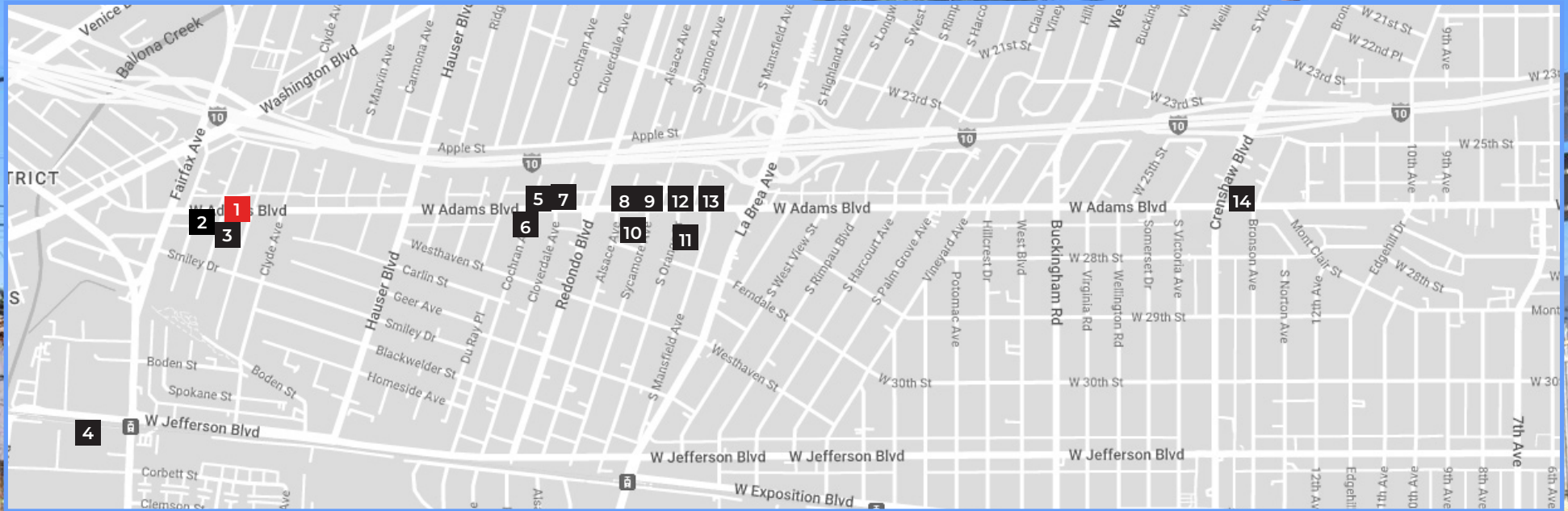
NEARBY AMENITIES & FUTURE DEVELOPMENTS



WEST ADAMS AMENITIES



NEARBY DEVELOPMENTS





ROBERT CLIFFORD
310.899.2725
rclifford@leewestla.com
ACT DRE 00999184

BRETT COLVIN
310.899.2731
bcolvin@leewestla.com
ACT DRE 02230987



Lee & Associates Los Angeles West, Inc.
1508 17th Street, Santa Monica, CA
310.899.2700 | www.leewestla.com | DRE 01222000

No warranty or representation is made to the accuracy of the foregoing information.