

An aerial photograph of a residential neighborhood in Los Angeles. A red outline highlights a specific property located between 5740 and 5754 W Adams Blvd. The property contains several small buildings, a parking lot, and some trees. The surrounding area includes other houses, streets, and parked cars.

# LAND/SMALL BUILDINGS AVAILABLE FOR LEASE

## SHORT TERM ACCEPTABLE

5740 - 5754 W ADAMS BLVD  
LOS ANGELES, CA 90016



A DIVISION OF



LEE &  
ASSOCIATES



# PREMIER LOS ANGELES LOCATION



Located at 5740-5754 W Adams Blvd in Los Angeles, is a highly desirable location. Situated on a prominent corner lot with excellent street frontage.

The site is strategically positioned near the 10 Freeway, providing easy access to the broader Los Angeles region.

There are multiple buildings on the site that can be utilized for retail, office, or storage uses.

Great for Contractors, Gyms, Delivery, or other uses that need outside area.



# PROPERTY INFORMATION



<b>TOTAL BUILDING SF</b>	± 2,445 SF
<b>LAND SF</b>	± 16,394 SF
<b>PRICE</b>	\$9,500/Month, MG
<b>OCCUPANCY</b>	Immediate
<b>PARKING</b>	Abundant Parking
<b>APN</b>	5048-009-057, 031,030,029,028

<b>FEATURES</b>	<ul style="list-style-type: none"><li>• Operational Food License</li><li>• Incredible Location</li><li>• Great Signage</li><li>• Great Freeway Access</li><li>• Multiple Usable Buildings</li><li>• Food and Services Close By</li><li>• Gated and Secure Property</li></ul>
<b>TERM</b>	2 - 5 Years

<b>CONTACTS</b>	<b>Robert Clifford</b> 310.899.2725 rclifford@leewestla.com AGT DRE 00999184
	<b>Brett Colvin</b> 310.899.2731 bcolvin@leewestla.com AGT DRE 02230987





# EXTERIOR PHOTOS





# INTERIOR PHOTOS





AERIAL SHOT



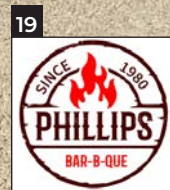
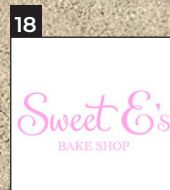
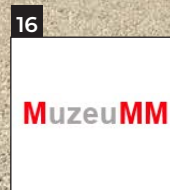
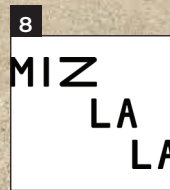
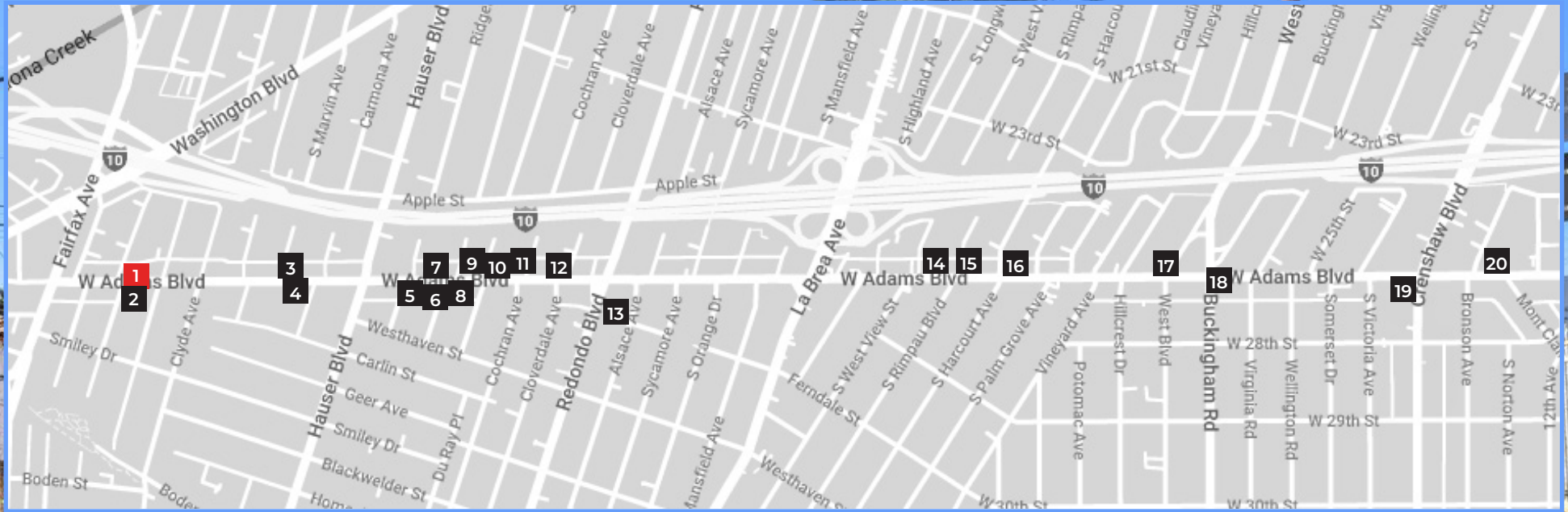


# NEARBY AMENITIES & FUTURE DEVELOPMENTS



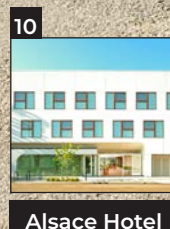
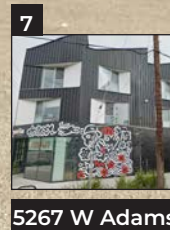
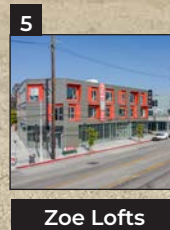
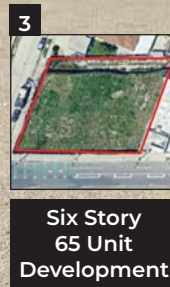
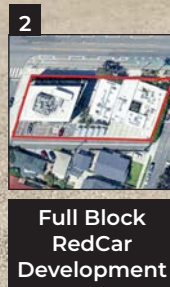
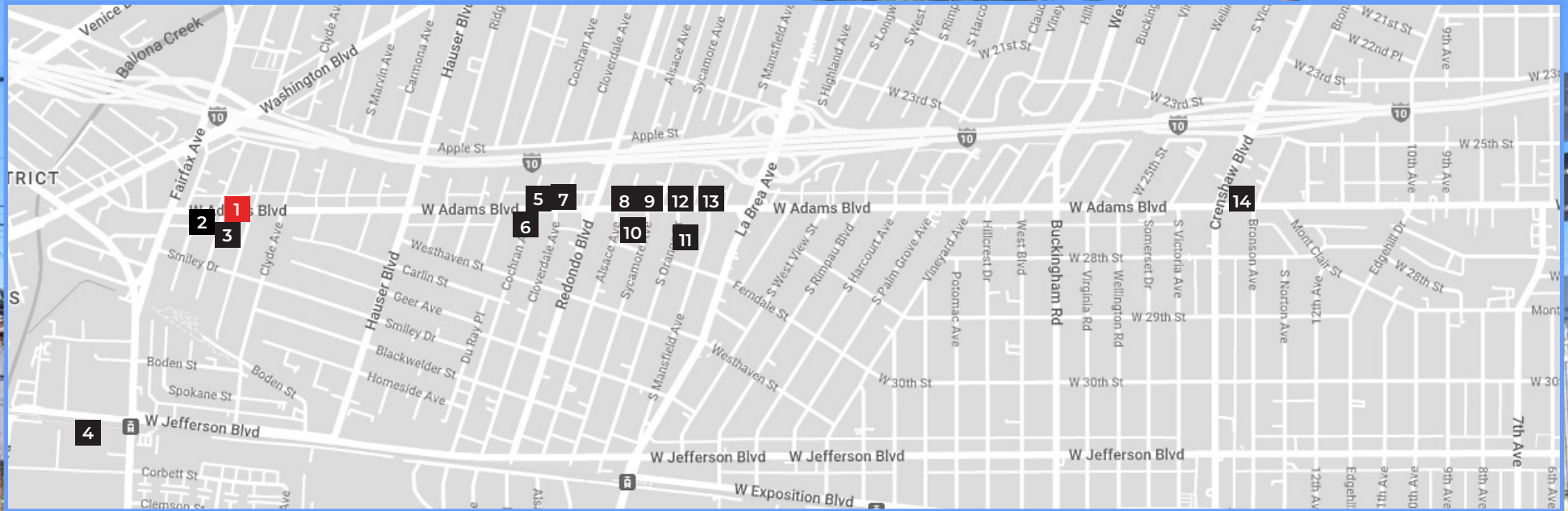


# WEST ADAMS AMENITIES





# NEARBY DEVELOPMENTS





**ROBERT CLIFFORD**  
310.899.2725  
rclifford@leewestla.com  
ACT DRE 00999184

**BRETT COLVIN**  
310.899.2731  
bcolvin@leewestla.com  
ACT DRE 02230987



Lee & Associates Los Angeles West, Inc.  
1508 17th Street, Santa Monica, CA  
310.899.2700 | [www.leewestla.com](http://www.leewestla.com) | DRE 01222000

No warranty or representation is made to the accuracy of the foregoing information.