

FOR SUBLEASE

**3221 S LA CIENEGA BOULEVARD
LOS ANGELES, CA 90016**



**± 9,100 SF OF INDUSTRIAL
SPACE AVAILABLE**



A DIVISION OF



**LEE &
ASSOCIATES**

PROPERTY DESCRIPTION



3221 S LA CIENEGA BOULEVARD LOS ANGELES, CA 90016

PREMISES ± 9,100 SF

RENT \$2.99/SF, IG

ZONING M1

PARKING SPACES 7 Spaces

TERM Sublease up to April 2028 (approx. 38 mo)

FEATURES

- Fully air conditioned warehouse/flex space
- Perimeter windows
- Skylights
- Ground level roll up door (12' w x 11' h)
- Bow truss architecture (11' 6" clear)
- Clean concrete floors
- Double door private entrance
- 24 hr/7 days access

CONTACT Alex Rivera
310.899.2742
arivera@leewestla.com
AGT DRE 01328712

Douglas Marshall, SIOR
310.899.2745
dmarshall@leewestla.com
BKR DRE 00869275

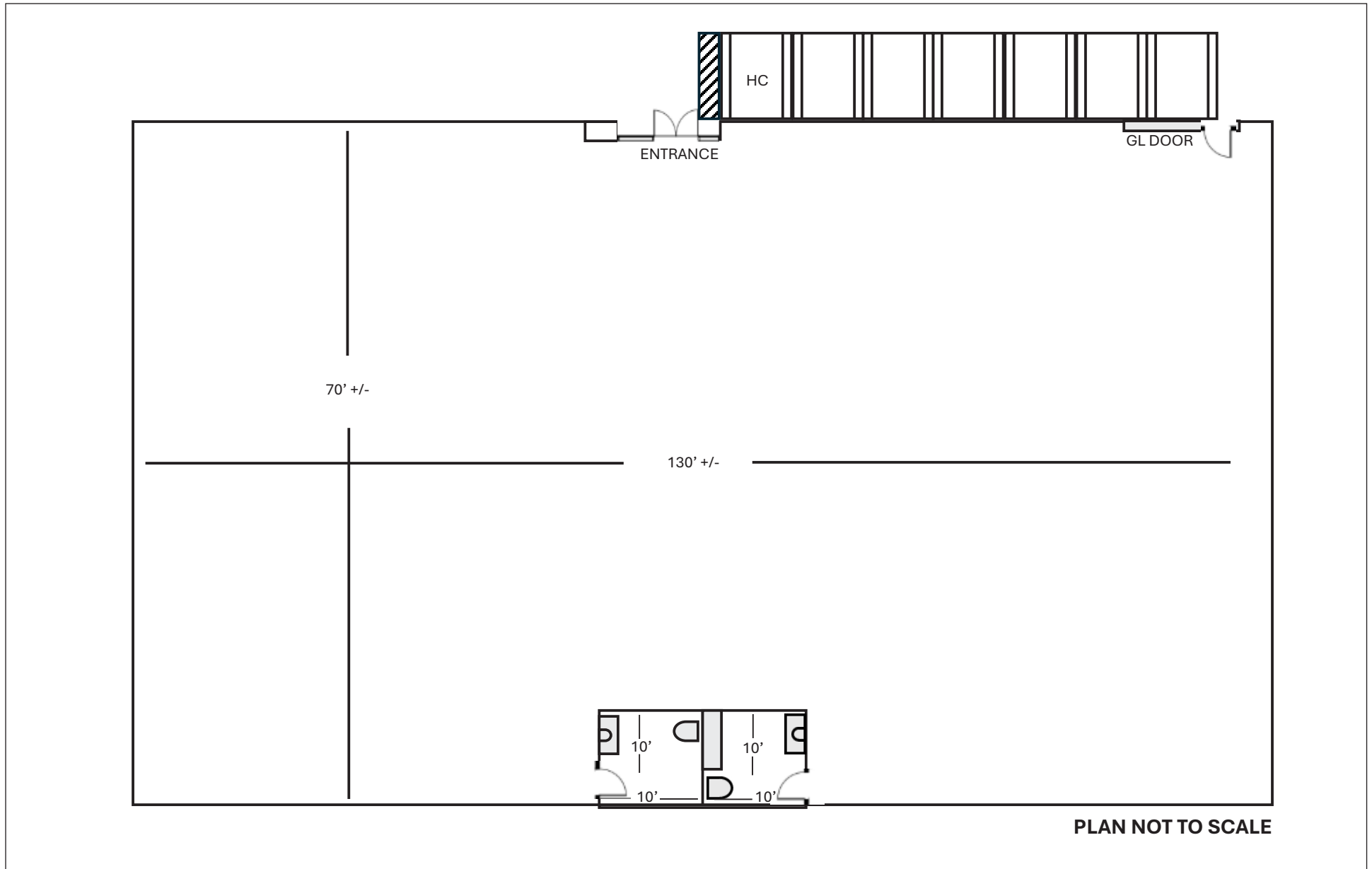
INTERIOR PHOTOS

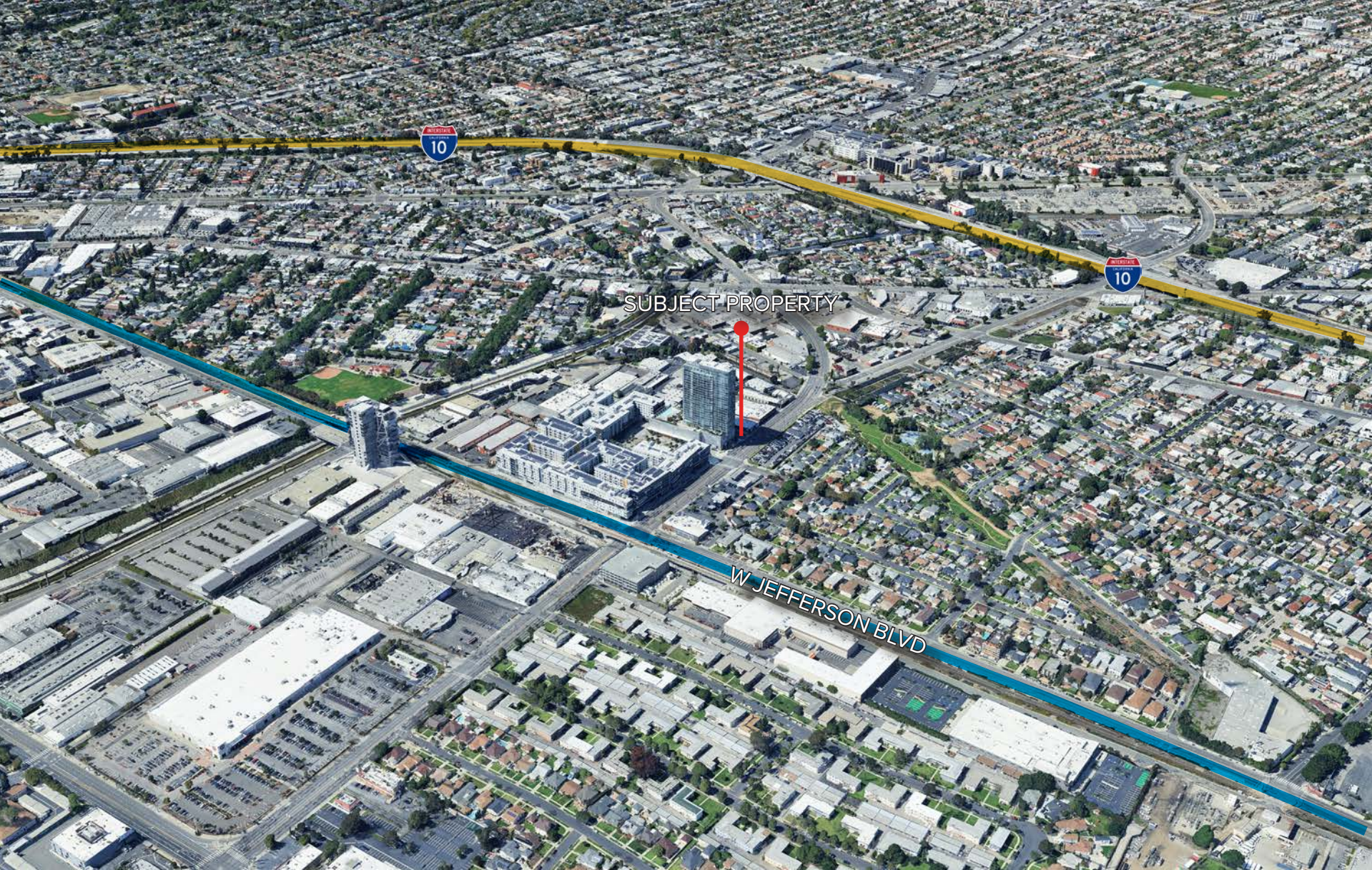
3221 S LA CIENEGA BOULEVARD
LOS ANGELES, CA 90016



FLOOR PLAN

3221 S LA CIENEGA BOULEVARD
LOS ANGELES, CA 90016





CONTACTS

3221 S LA CIENEGA BOULEVARD
LOS ANGELES, CA 90016

ALEX RIVERA

310.899.2742

arivera@leewestla.com

AGT DRE 01328712

DOUGLAS MARSHALL, SIOR

310.899.2745

dmarshall@leewestla.com

BKR DRE 00869275

Lee & Associates Los Angeles West, Inc.
1508 17th Street, Santa Monica, CA
310.899.2700 | www.leewestla.com | DRE 01222000

No warranty or representation is made to the accuracy of the foregoing information.

