

± 4,000 SF Building for Lease



\$2.85/Net: Year 1
\$3.25/Net: Year 2
\$3.50/Net: Year 3



5822 W Washington Blvd
Culver City, CA 90232

Specs & Features

5822 W Washington Blvd
Culver City, CA 90232



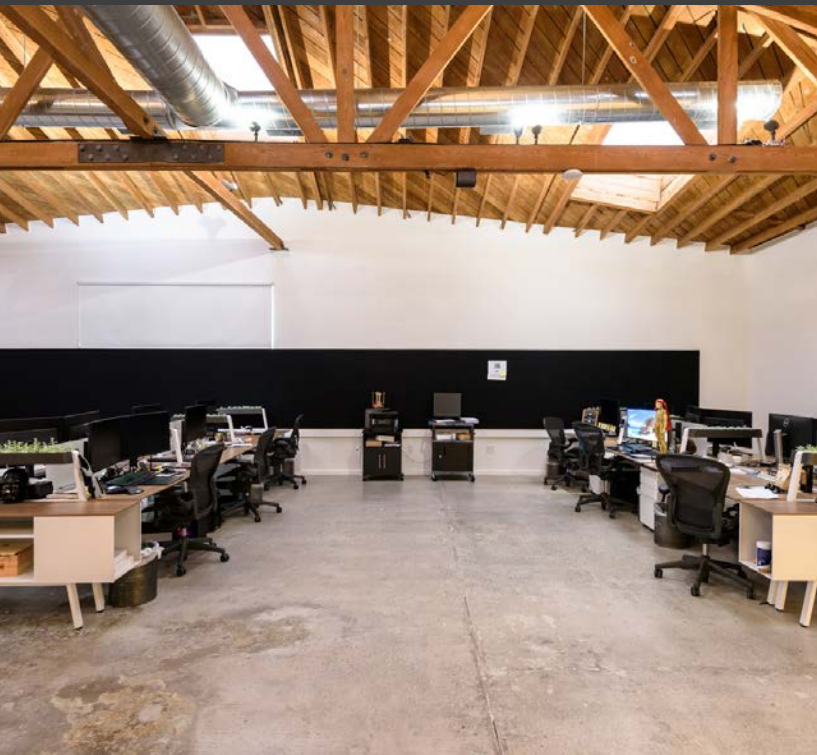
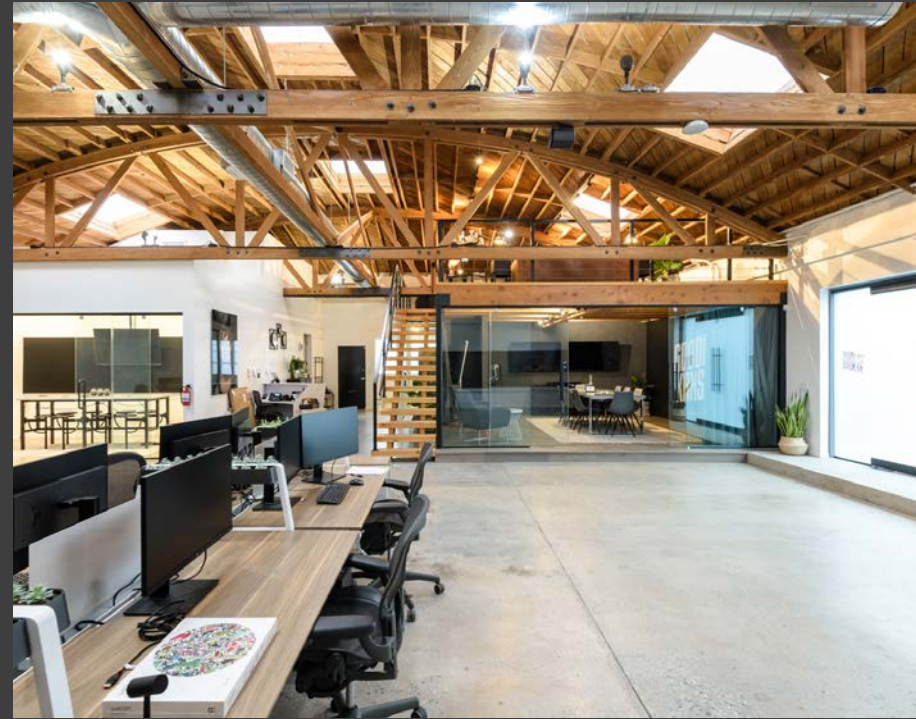
RENT	\$2.85/SF, Net - Year 1 \$3.25/SF, Net - Year 2 \$3.50/SF, Net - Year 3
BUILDING SIZE	± 4,000 SF
ZONING	CCM1*
AVAILABILITY	July 1, 2025
PARKING	7 Spaces - \$175/space (Street metered parking available)
TERM	Flexible
FEATURES	<ul style="list-style-type: none">- Standalone bow truss building- High end and practical buildout- Secured and air-conditioned server room- Remodeled restrooms, one with shower- Screening room- Central location

1508 17th Street, Santa Monica, CA | 310.899.2700
WWW.LEEWESTLA.COM | DRE 01222000

No warranty or representation is made to the accuracy of the foregoing information. Terms of sale or lease are subject to change or withdrawal without notice.

Interior Photos

5822 W Washington Blvd
Culver City, CA 90232



Interior Photos

5822 W Washington Blvd
Culver City, CA 90232



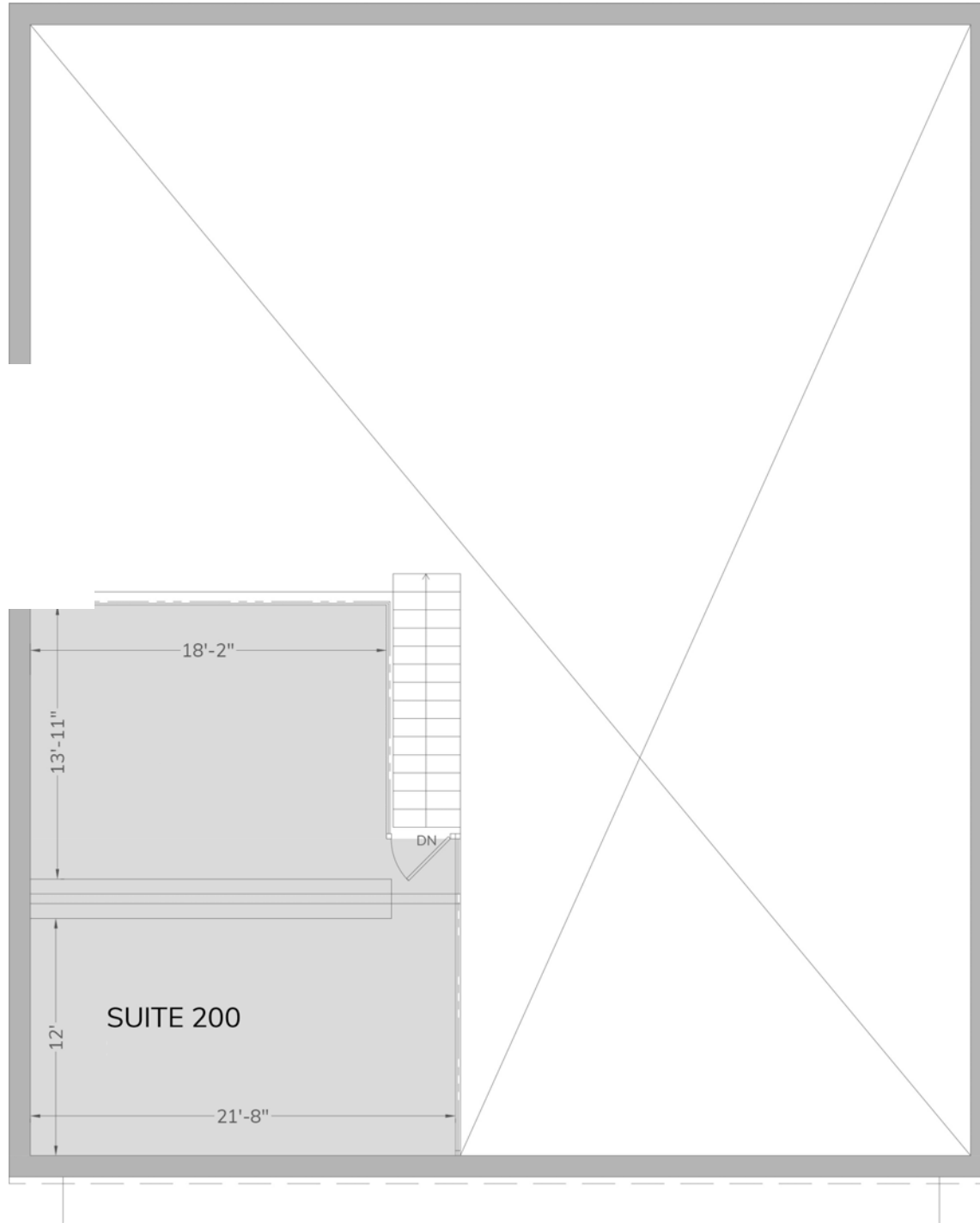
Floor Plan

5822 W Washington Blvd
Culver City, CA 90232



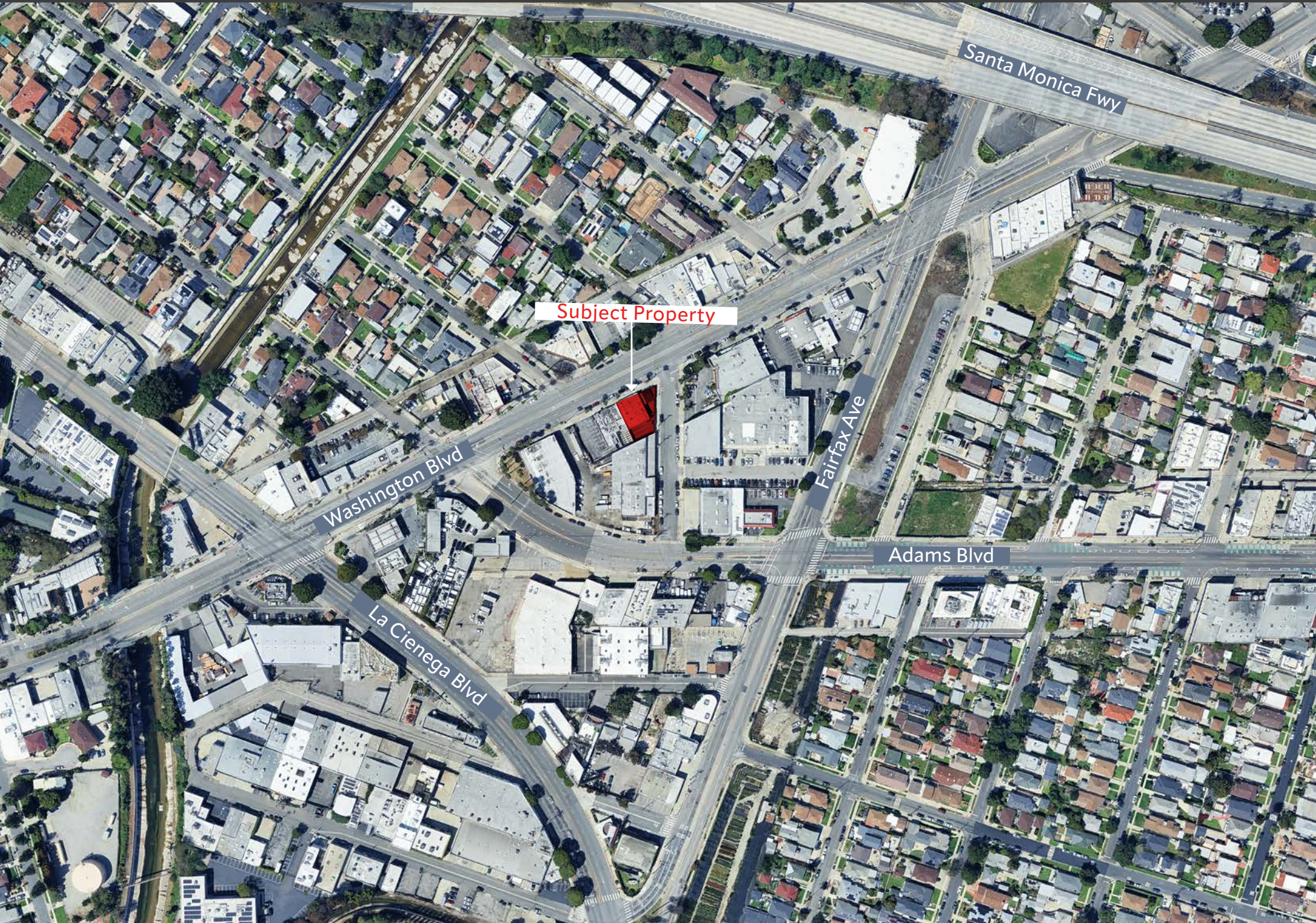
Floor Plan

5822 W Washington Blvd
Culver City, CA 90232



Site Aerial

5822 W Washington Blvd
Culver City, CA 90232



Subject Property

Washington Blvd

La Cienega Blvd

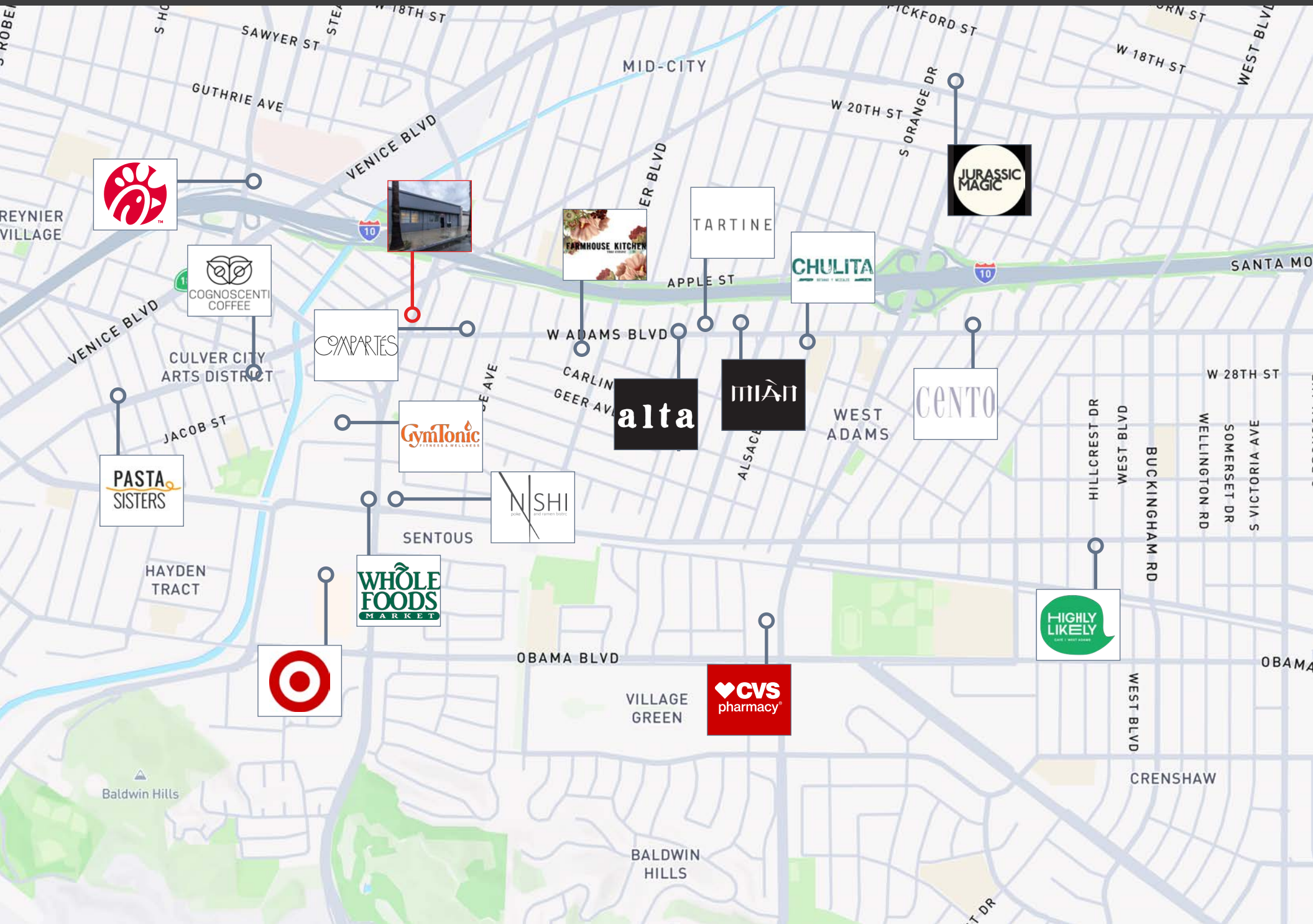
Fairfax Ave

Adams Blvd

Santa Monica Fwy

Nearby Amenities

5822 W Washington Blvd
Culver City, CA 90232





IAN AMECHE

PRINCIPAL

310.899.2748

iameche@leewestla.com

BKR DRE 01976053

ALEX RIVERA

ASSOCIATE

310.899.2742

arivera@leewestla.com

AGT DRE 01328712

DOUGLAS R. MARSHALL, SIOR

PRINCIPAL

310.899.2713

dmarshall@leewestla.com

BKR DRE 00869275